



PARTS CATALOGUE

AL115F (54P3) INDONESIA

AL115FC (54P4) INDONESIA

AL115FC (54PC) INDONESIA

AL115FC (54PD) INDONESIA

AL115F (54PE) INDONESIA

AL115F/AL115FC
PARTS CATALOGUE
©2013 by Yamaha Motor Co., Ltd.
1st edition, March 2013
All rights reserved.
Any reprinting or unauthorized use
without the written permission of
Yamaha Motor Co., Ltd.
is expressly prohibited.
Printed in Japan.

FOREWORD

This Parts Catalogue is related to the parts for the model(s) on the cover page. When you are ordering replacement parts, please refer to this Parts Catalogue and quote both part numbers and part names correctly.

1. Modifications or additions which have been made after the issue of the Parts Catalogue will be announced in the Parts News.

It is advisable that you make the necessary corrections to the Parts Catalogue according to the Parts News.

2. Abbreviations

The following abbreviations are used in this Parts Catalogue.

“UR” Use specified parts number.

“UN” Use as many as needed.

“AP” Alternate Parts

“LM” Locally Made (Parts need to be ordered locally)

“F#” Frame No. (Applicable machine No.)

“O/S” Over Size

3. The number of components for assembly

- Parts, which are to be supplied in an assembly, are listed with a dot (.) in front of the part name as shown below.
- The numeral appearing to the right of each component part indicates the quantity of parts for each assembly unit.

PART NO.	DESCRIPTION	Q'TY	REMARKS
2F5-83310-60	FRONT FLASHER LIGHT ASSY	2	
115-83311-60	.BULB (6V-18W)	1	

4. Applicable colours of graphics are represented in the “REMARKS” as shown below.

PART NO.	DESCRIPTION	Q'TY	REMARKS
2N4-24110-00-X5	FUEL TANK COMP.	2	MXR
3J1-24240-10	.GRAPHIC, FUEL TANK	1	FOR MXR

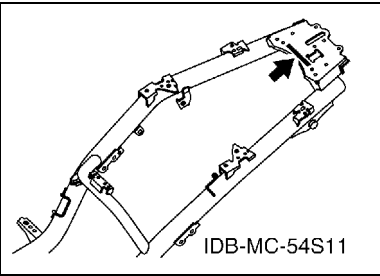
5. Note that the illustrations for reference in finding parts numbers are not to be used for assembling. When assembling, please use the applicable service manual.

6. The asterisk (*) before a reference number indicates modified items after the first edition.

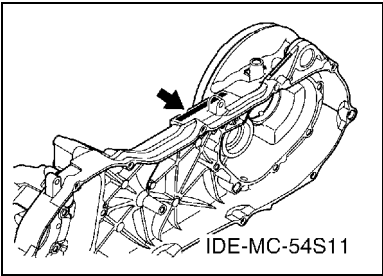
FOREWORD

7. Applicable Serial No.

Frame Serial No.



Engine Serial No.



8. Applicable Colour Code (The (*) mark shows Model colour.)

Abbreviation	Colour Name	Colour Code
BMC	BLUE METALLIC C	0775
DBPM3(*)	DARK BLUISH PURPLE METALLIC 3	1286
LCM4	LIGHT CYAN METALLIC 4	1056
RM7(*)	RED METALLIC 7	1218
SL	SILVER	0035
SMX(*)	BLACK METALLIC X	0903
VPBC5(*)	VIVID PURPLISH BLUE COCKTAIL 5	1177
VPRM2(*)	VIVID PURPLISH RED METALLIC 2	1339
WM6(*)	WHITE METALLIC 6	1124
WSA	WHITE SOLID A	1330

9. Applicable Starting Serial No.

Frame Serial No.

Serial No.	Name Of Q'ty Column	Model Code

Engine Serial No.

Serial No.	Name Of Q'ty Column	Model Code

CONTENTS

ENGINE

CYLINDER	1
CRANKSHAFT & PISTON	2
VALVE	3
CAMSHAFT & CHAIN	4
OIL PUMP	5
AIR SHROUD & FAN	6
INTAKE	7
EXHAUST	9
CRANKCASE	10
CRANKCASE COVER 1	12
STARTER	13
CLUTCH	14
TRANSMISSION	17

CHASSIS

FRAME	18
FENDER	19
SIDE COVER	21
REAR ARM & SUSPENSION	24
STEERING	25
FUEL TANK	27
SEAT	28
FRONT WHEEL FOR CAST WHEEL	30
FRONT WHEEL FOR SPOKE WHEEL	31
FRONT BRAKE CALIPER	32
FRONT BRAKE CALIPER 2	33
REAR WHEEL FOR CAST WHEEL	34
REAR WHEEL FOR SPOKE WHEEL	35
STEERING HANDLE & CABLE	36
FRONT MASTER CYLINDER	38
STAND & FOOTREST	39
LEG SHIELD	41
GENERATOR	45
STARTING MOTOR	46
FLASHER LIGHT	47
METER	48
HEADLIGHT	49
TAILLIGHT	50
HANDLE SWITCH & LEVER	51
ELECTRICAL 1	52
ELECTRICAL 2	53

INDEX

NUMERICAL INDEX	54
-----------------------	----

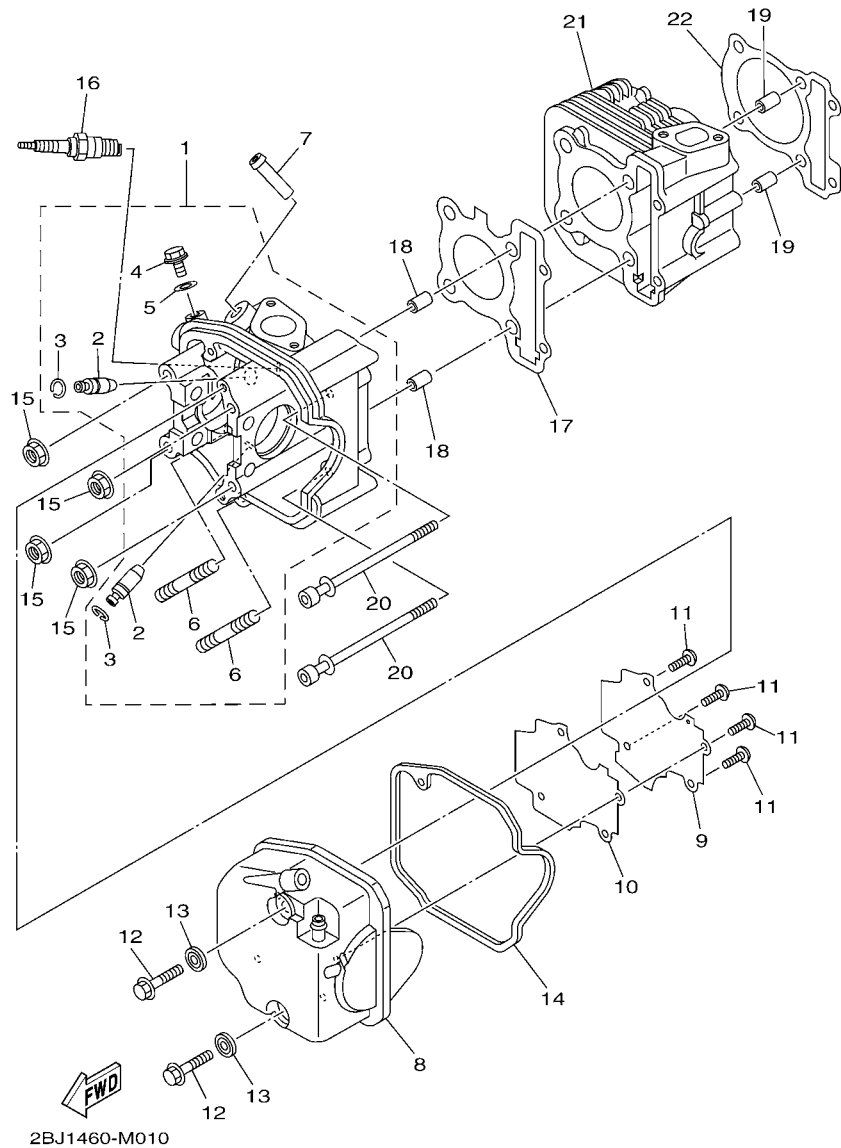


FIG. 1 CYLINDER

REF. NO.	PART NO.	DESCRIPTION	54P3	54P4	54PC	54PD	54PE	REMARKS
1	54P-E1102-00	CYLINDER HEAD ASSY	1	1	1	1	1	
2	54P-E1133-10	.GUIDE, VALVE 1	2	2	2	2	2	
3	93440-10085	.CIRCLIP	2	2	2	2	2	
4	95022-06010	.BOLT, FLANGE	1	1	1	1	1	
5	90430-06014	.GASKET	1	1	1	1	1	
6	95612-08618	.BOLT, STUD	2	2	2	2	2	
7	54P-E111J-00	PIPE 1	1	1	1	1	1	
8	54P-E1191-00	COVER, CYLINDER HEAD 1	1	1	1	1	1	
9	54P-E1165-00	PLATE, BREATHER	1	1	1	1	1	
10	54P-E1169-00	GASKET, BREATHER COVER	1	1	1	1	1	
11	90149-05801	SCREW	4	4	4	4	4	
12	95812-06030	BOLT, FLANGE	2	2	2	2	2	
13	1LB-E1173-00	WASHER, SEALING	2	2	2	2	2	
14	54P-E1193-00	GASKET, HEAD COVER 1	1	1	1	1	1	
15	90179-08518	NUT	4	4	4	4	4	
16	94700-00880	PLUG, SPARK (NGK CR6HSA)	1	1	1	1	1	UR
	94700-00895	PLUG, SPARK (ND U20FSR-U)	1	1	1	1	1	UR
17	54P-E1181-00	GASKET, CYLINDER HEAD 1	1	1	1	1	1	
18	91810-14809	PIN, DOWEL	2	2	2	2	2	
19	91810-14809	PIN, DOWEL	2	2	2	2	2	
20	90110-06868	BOLT, HEXAGON SOCKET HEAD	2	2	2	2	2	
21	54P-E1311-00	CYLINDER 1	1	1				
	54P-E1311-10	CYLINDER 1			1	1	1	
22	54P-E1351-00	GASKET, CYLINDER	1	1	1	1	1	

[illegible]



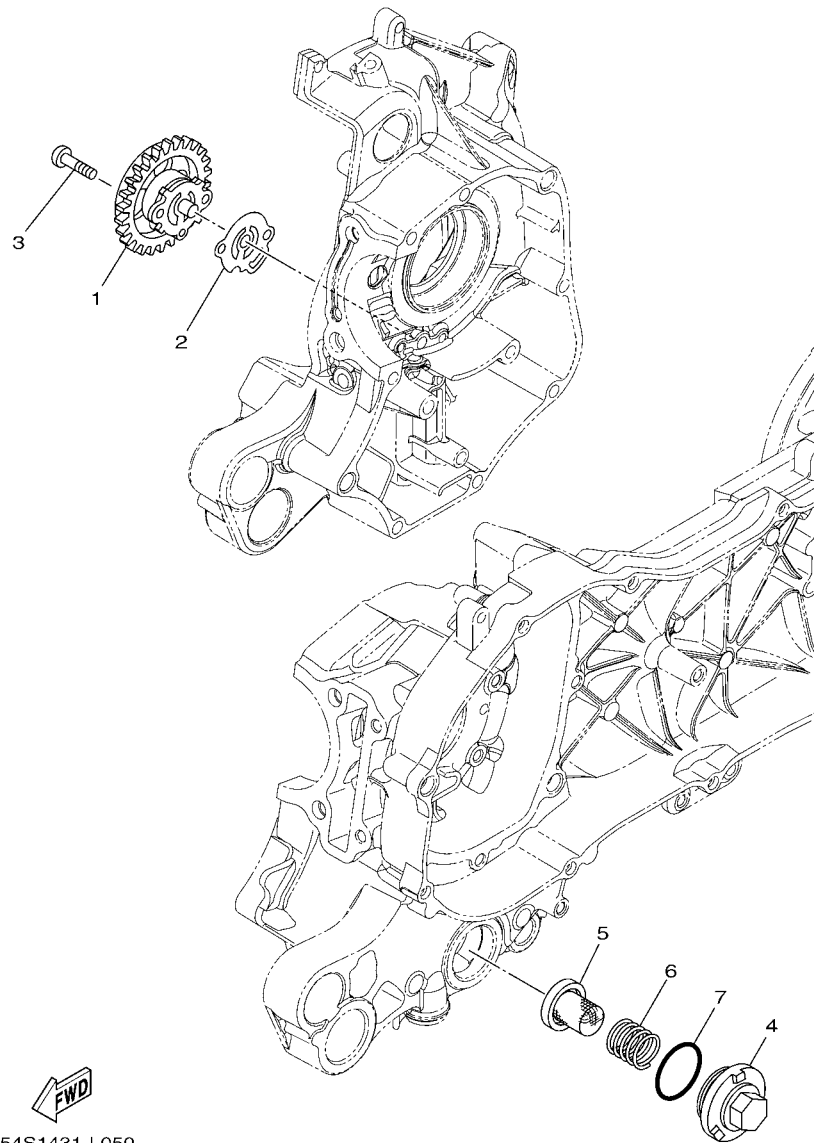


FIG. 5 OIL PUMP

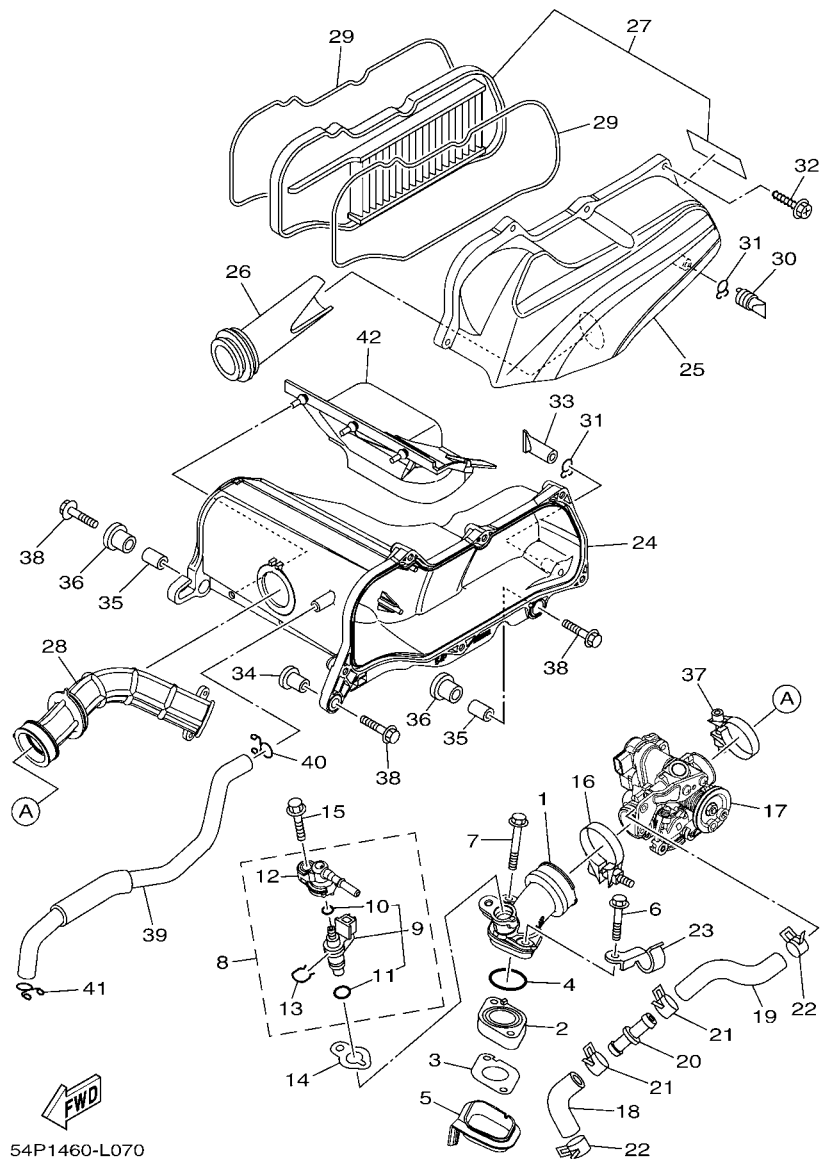


FIG. 7 INTAKE

REF. NO.	PART NO.	DESCRIPTION	54P3	54P4	54PC	54PD	54PE	REMARKS
1	54P-E3585-00	MANIFOLD	1	1	1	1	1	
2	54P-E3595-00	JOINT	1	1	1	1	1	
3	54P-E3556-10	GASKET, MANIFOLD	1	1	1	1	1	
4	93210-30611	O-RING	1	1	1	1	1	
5	54P-E3593-00	DAMPER	1	1	1	1	1	
6	95812-06035	BOLT, FLANGE	1	1	1	1	1	
7	95812-06050	BOLT, FLANGE	1	1	1	1	1	
8	54P-E3770-10	INJECTOR ASSY	1	1	1	1	1	
9	54P-E3761-10	.INJECTOR	1	1	1	1	1	
10	54P-E4147-00	..O-RING	1	1	1	1	1	
11	5CA-E4147-00	..O-RING	1	1	1	1	1	
12	54P-E3938-00	.PIPE	1	1	1	1	1	
13	54P-E4137-00	.CLIP	1	1	1	1	1	
14	54P-E3557-00	GASKET	1	1	1	1	1	
15	95812-06025	BOLT, FLANGE	1	1	1	1	1	
16	54P-E3474-00	BAND	1	1	1	1	1	
17	54P-E3750-10	THROTTLE BODY ASSY	1	1	1	1	1	
18	54P-E3892-00	HOSE, AIR 2	1	1	1	1	1	
19	54P-E3895-00	HOSE, AIR	1	1	1	1	1	
20	54P-E3815-00	JOINT 1	1	1	1	1	1	
21	90467-15804	CLIP	2	2	2	2	2	
22	90467-15804	CLIP	2	2	2	2	2	
23	54P-E4146-00	PLATE	1	1	1	1	1	
24	54P-E4411-10	CASE, AIR CLEANER 1	1	1				
	54P-E4411-00	CASE, AIR CLEANER 1			1	1	1	
25	54P-E4412-10	CAP, CLEANER CASE 1	1	1				
	54P-E4412-00	CAP, CLEANER CASE 1			1	1	1	

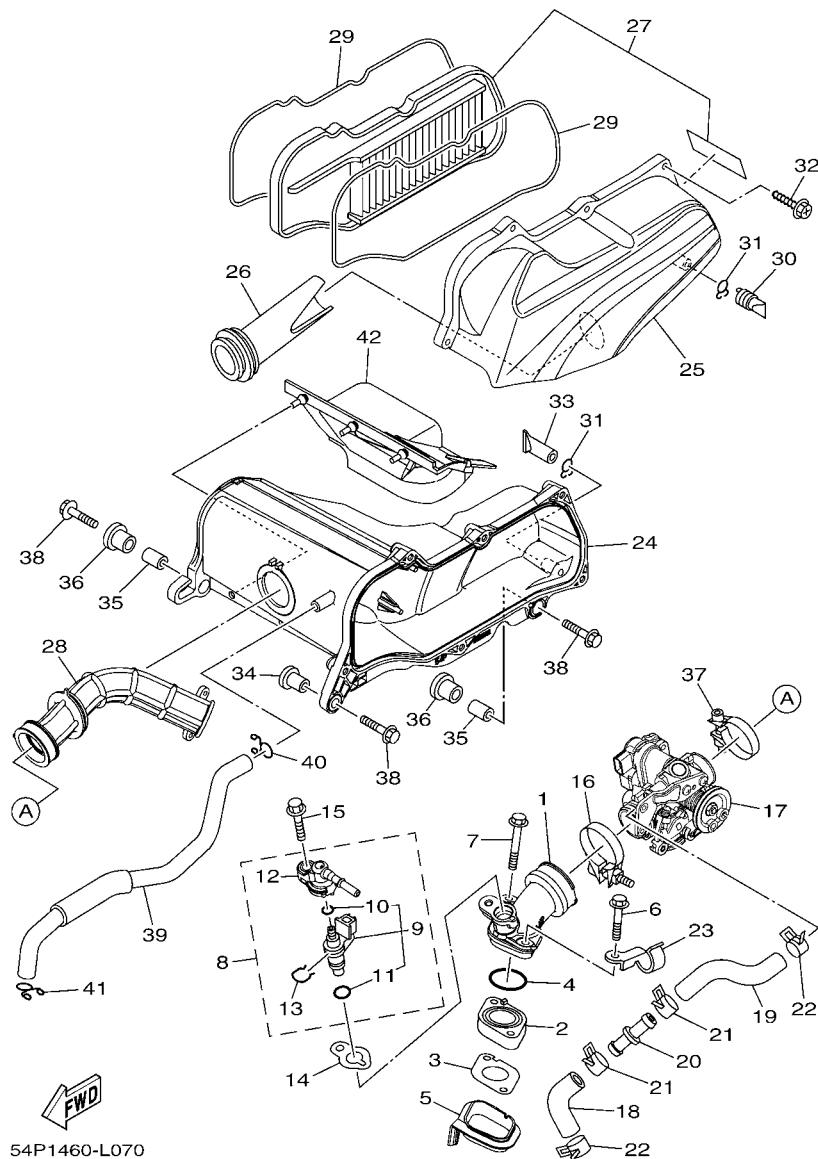
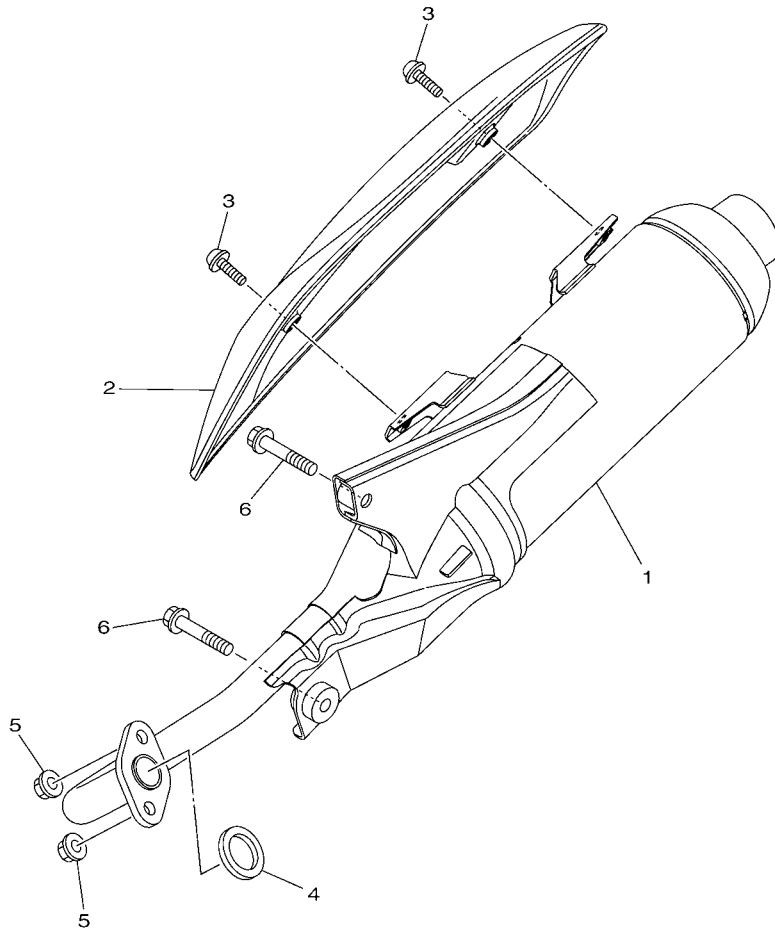


FIG. 7 INTAKE

REF. NO.	PART NO.	DESCRIPTION	54P3	54P4	54PC	54PD	54PE	REMARKS
26	54P-E4437-10	DUCT	1	1				
	54P-E4437-00	DUCT			1	1	1	
27	54P-WE445-10	AIR CLEANER ELEMENT ASSY	1	1				
	54P-WE445-00	AIR CLEANER ELEMENT ASSY			1	1	1	
28	54P-E4453-10	JOINT, AIR CLEANER 1	1	1				
	54P-E4453-00	JOINT, AIR CLEANER 1			1	1	1	
29	54P-E4452-10	SEAL	2	2				
	54P-E4452-00	SEAL			2	2	2	
30	5TN-E443G-00	PIPE, DRAIN 2	1	1				
	5TP-E443G-00	PIPE, DRAIN 2			1	1	1	
31	90467-12809	CLIP	2	2				
	90467-12807	CLIP			2	2	2	
32	97702-50025	SCREW, TAPPING	6	6				
	90163-05803	SCREW, TAPPING			6	6	6	
33	5TL-E443E-00	PIPE, DRAIN	1	1				
	28D-E443E-00	PIPE, DRAIN			1	1	1	
34	90387-06891	COLLAR	1	1	1	1	1	
35	90387-064W3	COLLAR	2	2	2	2	2	
36	90480-13013	GROMMET	2	2	2	2	2	
37	54P-E3575-00	BAND	1	1	1	1	1	
38	95812-06025	BOLT, FLANGE	3	3	3	3	3	
39	54P-E1166-00	PIPE, BREATHER 1	1	1	1	1	1	
40	90467-13858	CLIP	1	1	1	1	1	
41	90467-13858	CLIP	1	1	1	1	1	
42	54P-E442F-10	PROTECTOR	1	1	1	1	1	



54P3460-M080

FIG. 8 EXHAUST

REF. NO.	PART NO.	DESCRIPTION	54P3	54P4	54PC	54PD	54PE	REMARKS
1	54P-E4610-10	EXHAUST PIPE ASSY 1	1	1	1	1	1	
2	54P-E4718-10	PROTECTOR, MUFFLER 1	1	1	1	1	1	
3	90111-06811	BOLT,HEX. SOCKET BUTTON	2	2	2	2	2	
4	14D-E4613-00	GASKET, EXHAUST PIPE	1	1	1	1	1	
5	95702-08500	NUT, FLANGE	2	2	2	2	2	
6	95812-08045	BOLT, FLANGE	2	2	2	2	2	

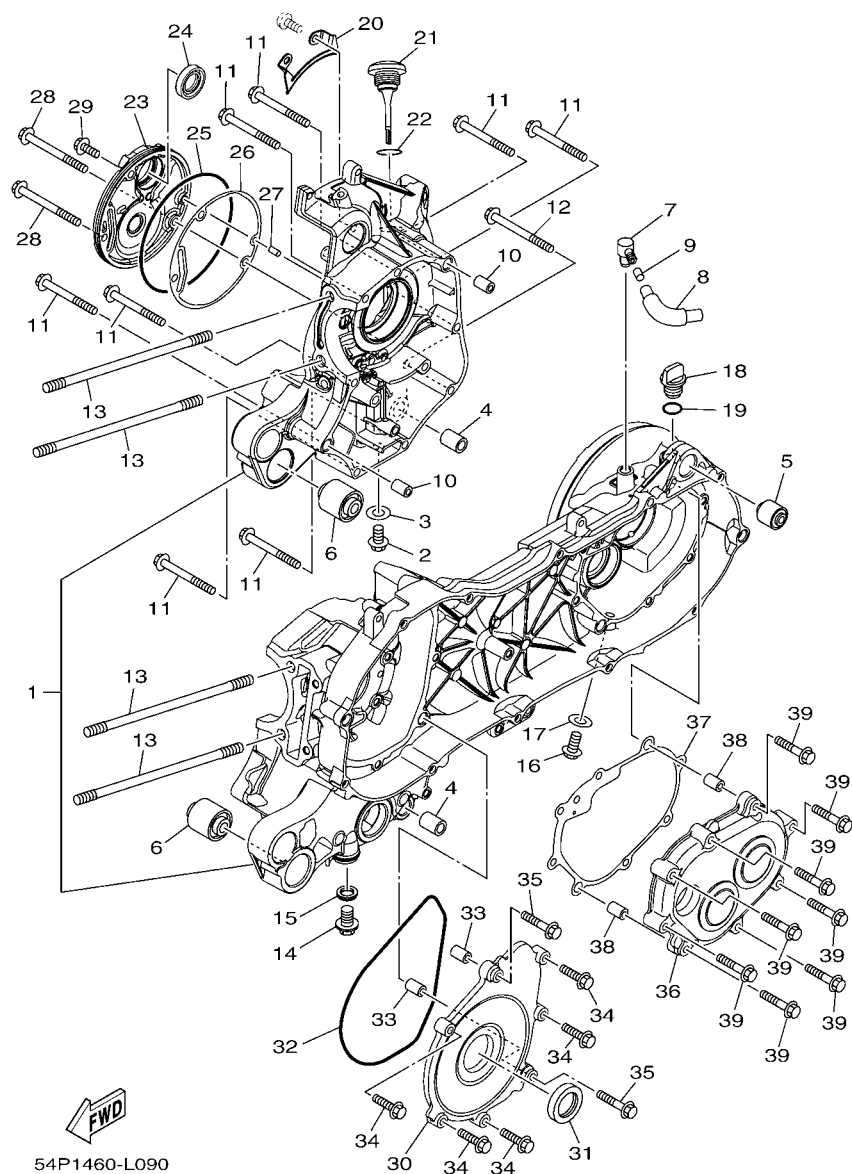


FIG. 9 CRANKCASE

REF. NO.	PART NO.	DESCRIPTION	54P3	54P4	54PC	54PD	54PE	REMARKS
1	54P-E5150-00	CRANKCASE ASSY	1	1				
	54P-E5150-10	CRANKCASE ASSY			1	1	1	
2	95022-08012	BOLT, FLANGE	1	1	1	1	1	
3	90430-08119	GASKET	1	1	1	1	1	
4	54P-F7121-00	BUSH	2	2	2	2	2	
5	5MX-F2216-00	BUSH, REAR SHOCK ABSORBER	1	1	1	1	1	
6	90388-10805	DAMPER	2	2	2	2	2	
7	54P-E5371-00	BREATHER	1	1	1	1	1	
8	54P-E5373-00	PIPE, BREATHER	1	1	1	1	1	
9	14D-E5408-00	ELEMENT 2	1	1	1	1	1	
10	91810-14809	PIN, DOWEL	2	2	2	2	2	
11	95022-06060	BOLT, FLANGE	8	8	8	8	8	
12	95022-06070	BOLT, FLANGE	1	1	1	1	1	
13	90116-08843	BOLT, STUD	4	4	4	4	4	
14	90340-12808	PLUG, STRAIGHT SCREW	1	1	1	1	1	
15	4YS-E1198-00	GASKET	1	1	1	1	1	
16	95812-08016	BOLT, FLANGE	1	1	1	1	1	
17	90430-08119	GASKET	1	1	1	1	1	
18	5LW-E5363-00	PLUG, OIL	1	1	1	1	1	
19	93210-148H8	O-RING	1	1	1	1	1	
20	54P-E5113-00	PLATE	1	1	1	1	1	
21	54P-E5362-00	PLUG, OIL LEVEL	1	1	1	1	1	
22	5LW-E3769-00	O-RING	1	1	1	1	1	
23	54P-E5417-00	COVER, CAP	1	1	1	1	1	
24	93102-19814	OIL SEAL	1	1	1	1	1	
25	93211-07800	O-RING	1	1	1	1	1	
26	54P-E5453-00	GASKET	1	1	1	1	1	

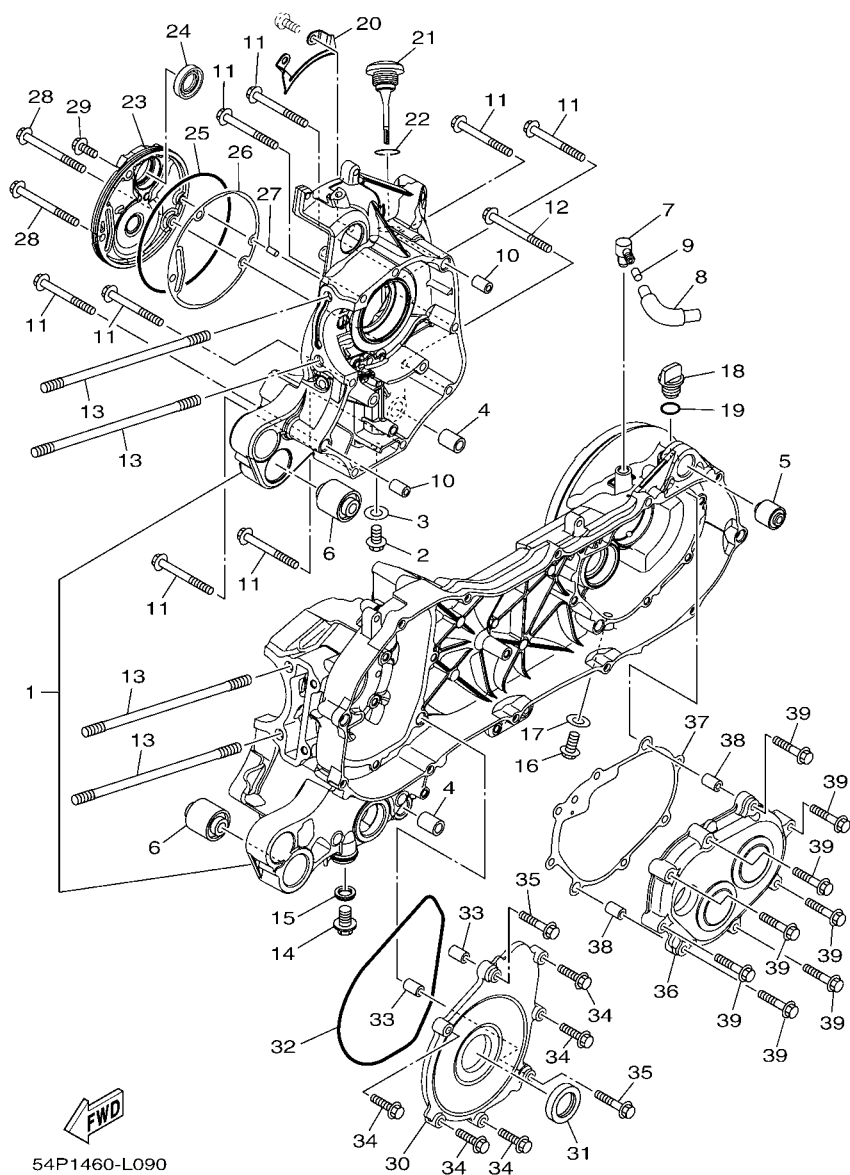


FIG. 9 CRANKCASE

[illegible]

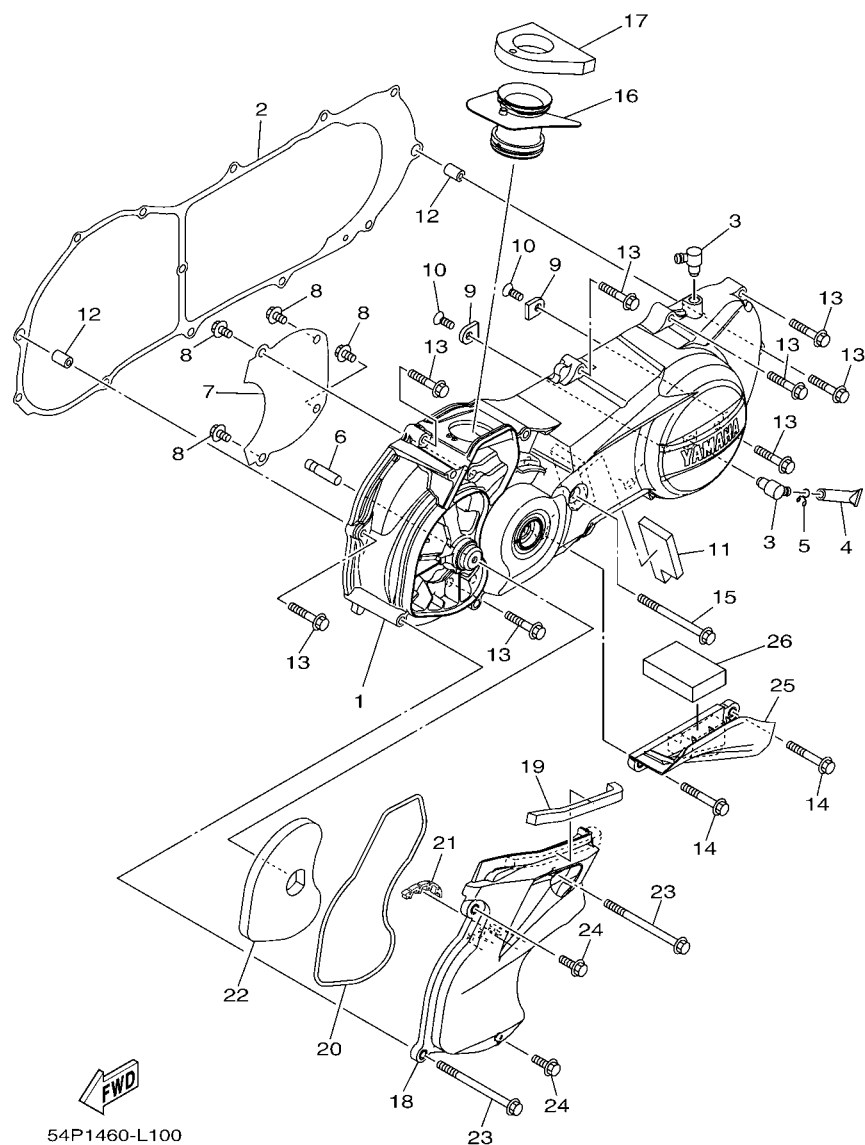


FIG. 10 CRANKCASE COVER 1

REF. NO.	PART NO.	DESCRIPTION	54P3	54P4	54PC	54PD	54PE	REMARKS
1	54P-E5411-00	COVER, CRANKCASE 1	1	1	1	1	1	
2	54P-E5451-00	GASKET, CRANKCASE COVER 1	1	1	1	1	1	
3	54P-E5371-00	BREATHER	2	2	2	2	2	
4	4ST-E443E-00	PIPE, DRAIN	1	1	1	1	1	
5	90467-110A3	CLIP	1	1	1	1	1	
6	5LW-15659-01	SHAFT	1	1	1	1	1	
7	54P-E5191-00	PLATE	1	1	1	1	1	
8	95022-06010	BOLT, FLANGE	4	4	4	4	4	
9	54P-E5383-00	PLATE, BEARING COVER	2	2	2	2	2	
10	90151-06811	SCREW, COUNTERSUNK	2	2	2	2	2	
11	54P-E5316-00	DAMPER 1	1	1	1	1	1	
12	91810-14809	PIN, DOWEL	2	2	2	2	2	
13	95022-06035	BOLT, FLANGE	8	8	8	8	8	
14	95022-06045	BOLT, FLANGE	2	2	2	2	2	
15	95022-06080	BOLT, FLANGE	1	1	1	1	1	
16	54P-E5473-00	DUCT, AIR	1	1	1	1	1	
17	54P-E5408-00	ELEMENT 2	1	1	1	1	1	
18	54P-E5471-00	DUCT, AIR	1	1	1	1	1	
19	90520-10811	DAMPER, PLATE	1	1	1	1	1	
20	54P-E5472-00	SEAL, AIR DUCT	1	1	1	1	1	
21	54P-E5495-00	SEAL, PROTECTOR 1	1	1	1	1	1	
22	54P-E5407-00	ELEMENT 1	1	1	1	1	1	
23	95822-06090	BOLT, FLANGE	2	2	2	2	2	
24	95822-06020	BOLT, FLANGE	2	2	2	2	2	
25	54P-E5413-00	COVER	1	1	1	1	1	
26	90520-15806	DAMPER, PLATE	1	1	1	1	1	

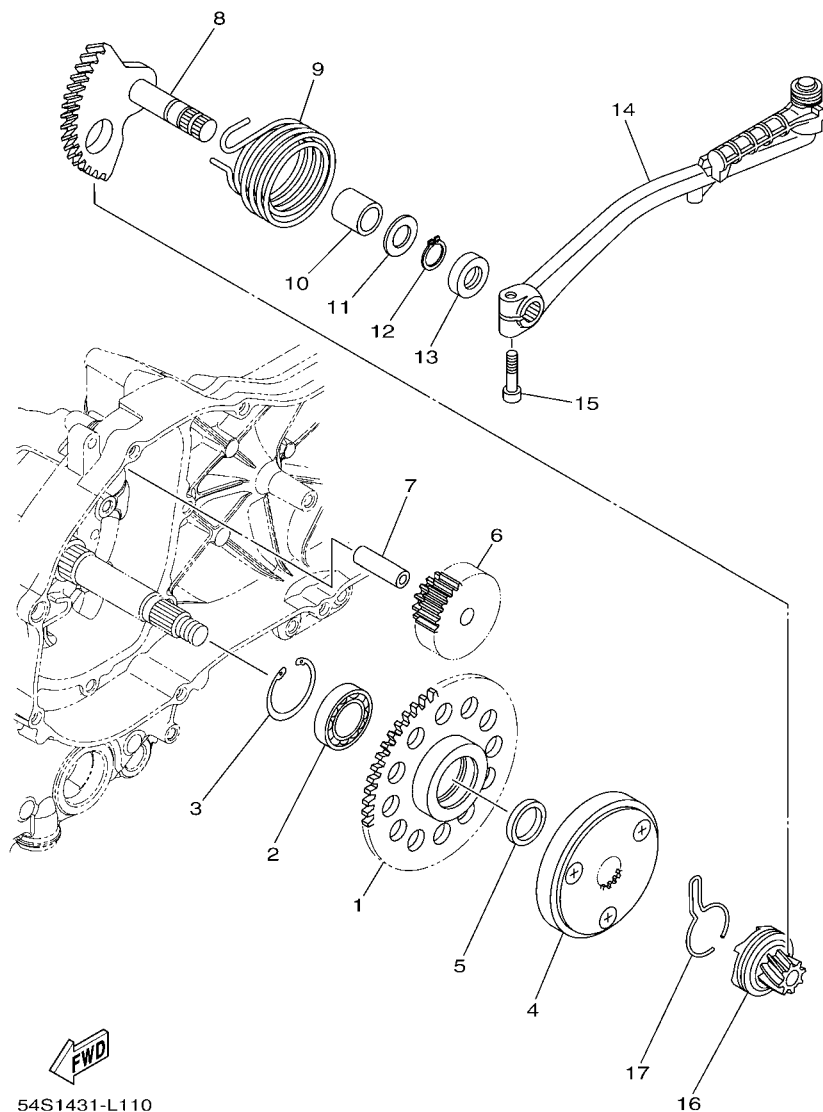


FIG. 11 STARTER

REF. NO.	PART NO.	DESCRIPTION	54P3	54P4	54PC	54PD	54PE	REMARKS
1	54P-E5524-00	WHEEL, STARTER	1	1	1	1	1	
2	93306-804Y3	BEARING	1	1	1	1	1	UR
	93306-804Y6	BEARING	1	1	1	1	1	UR
	93306-804Y4	BEARING	1	1	1	1	1	UR
3	93450-32837	CIRCLIP	1	1	1	1	1	
4	18S-E5570-00	STARTER CLUTCH ASSY	1	1				
	54P-E5570-00	STARTER CLUTCH ASSY			1	1	1	
5	1GC-E5598-00	COLLAR	1	1				
	44D-E5598-00	COLLAR			1	1	1	
6	54P-E5512-00	GEAR, IDLER 1	1	1	1	1	1	
7	44D-E5521-00	SHAFT 1	1	1	1	1	1	
8	5TL-E5601-10	KICK SHAFT ASSY	1	1	1	1	1	
9	90508-32768	SPRING, TORSION	1	1	1	1	1	
10	90380-15811	BUSH, SOLID	1	1	1	1	1	
11	90201-154E8	WASHER, PLATE (T=1.0)	1	1	1	1	1	
12	99009-15400	CIRCLIP	1	1	1	1	1	
13	93102-15801	OIL SEAL	1	1	1	1	1	
14	54P-E5620-00	KICK CRANK ASSY	1	1	1	1	1	
15	91312-06025	BOLT	1	1	1	1	1	
16	54P-E5630-00	KICK PINION ASSY	1	1	1	1	1	UR
	4VP-E5630-00	KICK PINION ASSY	1	1	1	1	1	UR
17	5MX-E5673-00	CLIP	1	1	1	1	1	

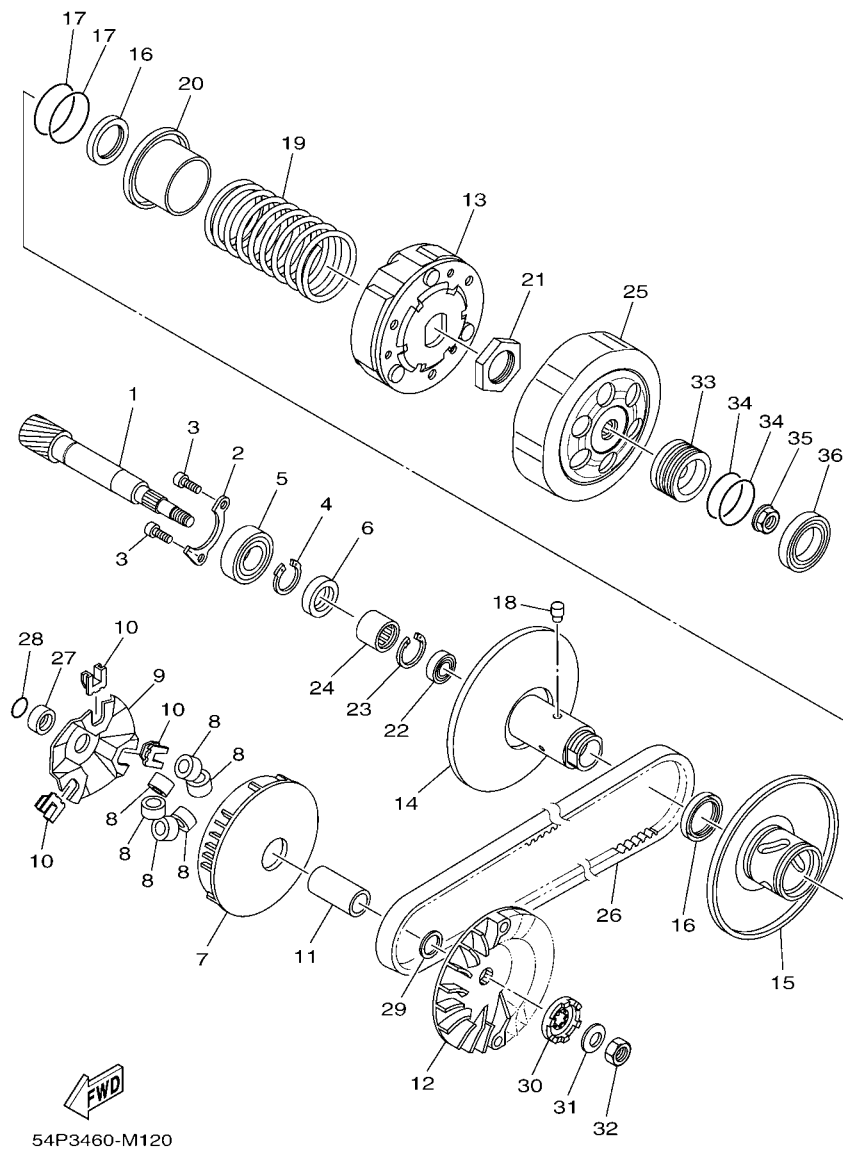


FIG. 12 CLUTCH

REF. NO.	PART NO.	DESCRIPTION	54P3	54P4	54PC	54PD	54PE	REMARKS
1	54P-E6111-00	GEAR, PRIMARY DRIVE	1	1	1	1	1	
2	54P-E7471-00	PLATE, COVER	1	1	1	1	1	
3	91312-06010	BOLT	2	2	2	2	2	
4	99009-17400	CIRCLIP	1	1	1	1	1	
5	93306-253Y9	BEARING	1	1	1	1	1	
6	93102-17803	OIL SEAL	1	1	1	1	1	
7	54P-E7620-10	PRIMARY SLIDING SHEAVE COMP.	1	1				
	54P-E7620-00	PRIMARY SLIDING SHEAVE COMP.			1	1	1	
8	54P-E7632-10	WEIGHT	6	6				
	54P-E7632-00	WEIGHT			6	6	6	
9	1KP-E7623-00	CAM	1	1				
	54P-E7623-00	CAM			1	1	1	
10	1KP-E7653-00	SLIDER	3	3				
	54P-E7653-00	SLIDER			3	3	3	
11	1KP-E7674-00	COLLAR, GUIDE	1	1				
	54P-E7674-00	COLLAR, GUIDE			1	1	1	
12	1KP-E7611-00	SHEAVE, PRIMARY FIXED	1	1				
	54P-E7611-00	SHEAVE, PRIMARY FIXED			1	1	1	
13	54P-E6620-10	CLUTCH CARRIER ASSY	1	1				
	54P-E6620-00	CLUTCH CARRIER ASSY			1	1	1	
14	54P-E7660-10	SECONDARY FIXED SHEAVE COMP.	1	1				
	54P-E7660-00	SECONDARY FIXED SHEAVE COMP.			1	1	1	
15	54P-E7670-10	SECONDARY SLIDING SHEAVE	1	1				
	54P-E7670-00	SECONDARY SLIDING SHEAVE			1	1	1	
16	93104-33805	OIL SEAL	2	2				
	54P-E7465-00	SEAL			2	2	2	
17	93210-38800	O-RING	2	2				

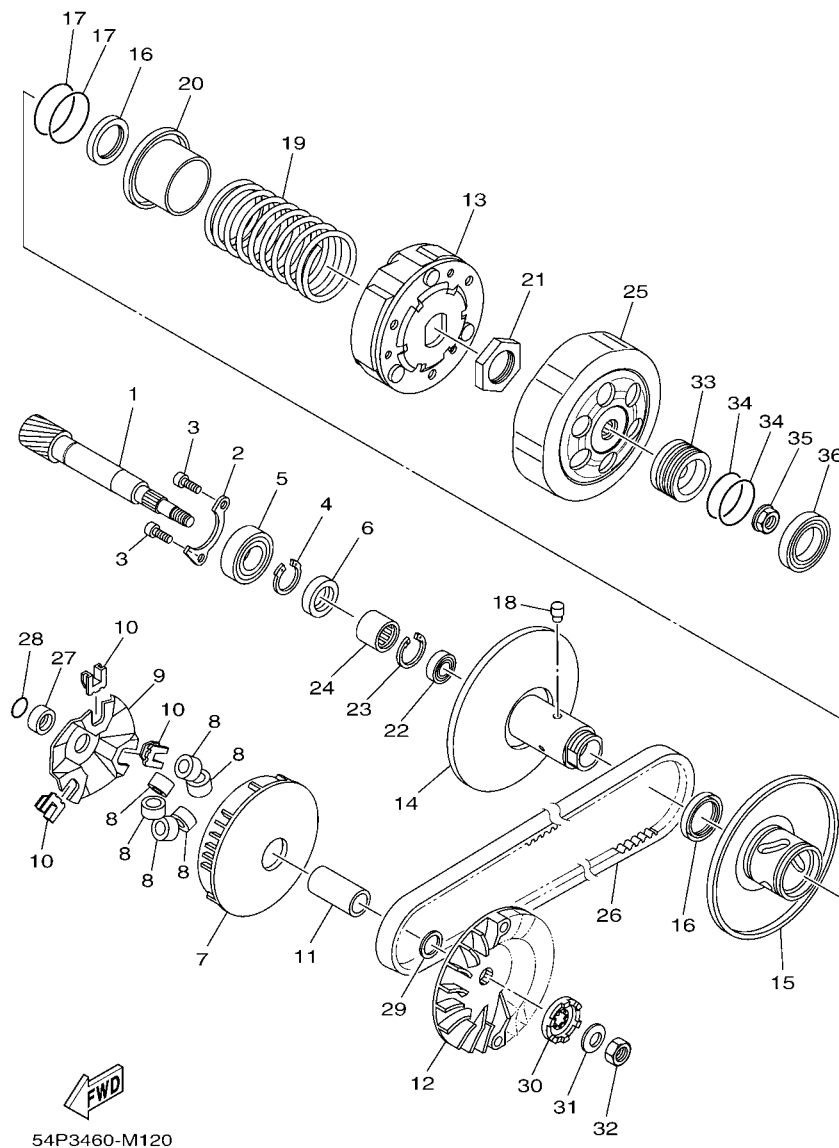


FIG. 12 CLUTCH

REF. NO.	PART NO.	DESCRIPTION	54P3	54P4	54PC	54PD	54PE	REMARKS
17	54P-E7465-10	SEAL			2	2	2	
18	1KP-E7664-00	PIN, GUIDE	3	3				
	5TL-E7664-00	PIN, GUIDE			3	3	3	
19	54P-E7683-10	SPRING, SECONDARY	1	1				
	54P-E7683-00	SPRING, SECONDARY			1	1	1	
20	1KP-E7684-00	SEAT, SECONDARY SPRING	1	1				
	54P-E7684-00	SEAT, SECONDARY SPRING			1	1	1	
21	90170-28801	NUT	1	1				
	44D-E7668-00	NUT			1	1	1	
22	93317-417Y3	BEARING	1	1				
	54P-E7678-00	BEARING			1	1	1	
23	93450-24831	CIRCLIP	1	1				
	44D-E5744-00	CIRCLIP			1	1	1	
24	52B-E7678-00	BEARING	1	1				
	54P-E7678-10	BEARING			1	1	1	
25	54P-E6611-10	CLUTCH HOUSING COMP.	1	1				
	54P-E6611-00	CLUTCH HOUSING COMP.			1	1	1	
26	54P-E7641-00	V-BELT	1	1	1	1	1	
27	1GC-E7645-00	COLLAR	1	1				
	44D-E7645-00	COLLAR			1	1	1	
28	93210-16805	O-RING	1	1	1	1	1	
29	90201-15841	WASHER, PLATE	1	1	1	1	1	
30	5MX-E5657-00	CLUTCH, ONEWAY	1	1	1	1	1	
31	90208-12808	WASHER, CONICAL SPRING	1	1	1	1	1	
32	90170-12800	NUT	1	1	1	1	1	
33	54P-E7649-10	SPACER	1	1				
	54P-E7649-00	SPACER			1	1	1	

[illegible]

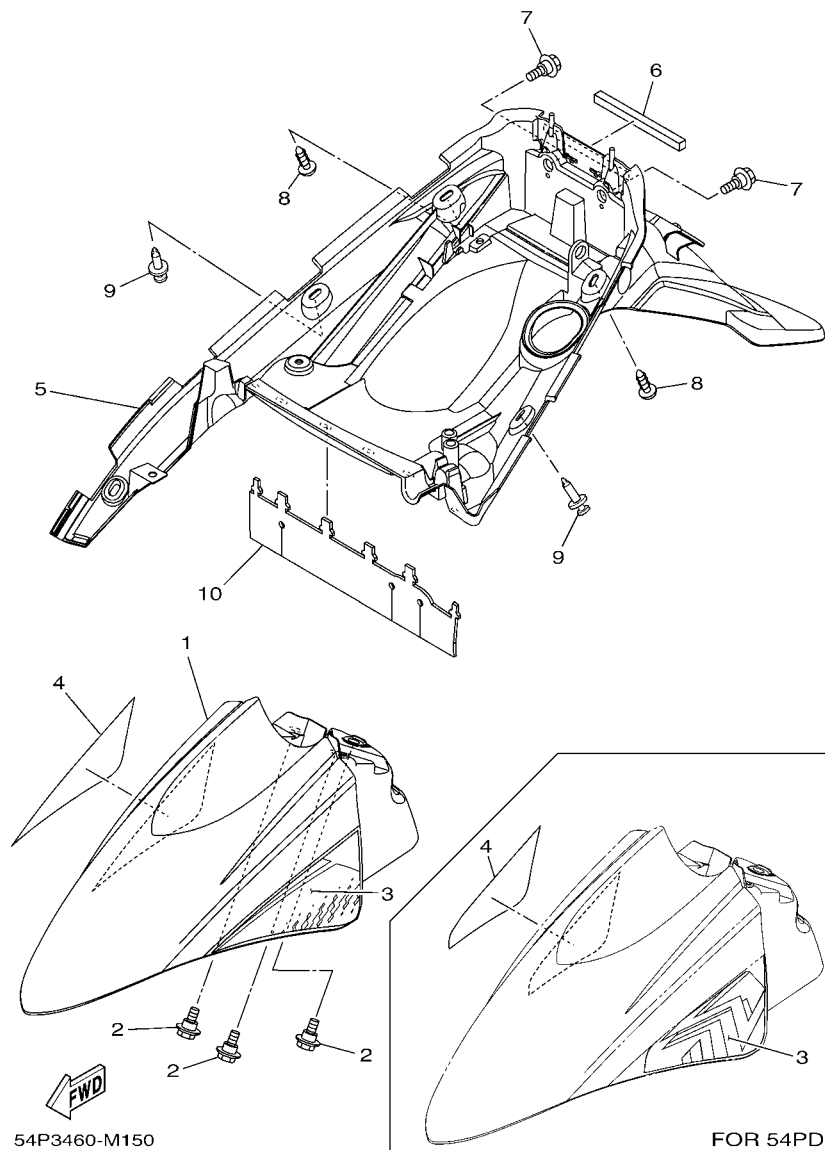


FIG. 15 FENDER

REF. NO.	PART NO.	DESCRIPTION	54P3	54P4	54PC	54PD	54PE	REMARKS
1	54P-F1511-00-P3	FENDER, FRONT	1	1				FOR WM6
	54P-F1511-00-PA	FENDER, FRONT	1	1				FOR VPRM2
	54P-F1511-00-P1	FENDER, FRONT	1	1				FOR RM7
	54P-F1511-00-P8	FENDER, FRONT	1	1				FOR VPBC5
	54P-F1511-00-P9	FENDER, FRONT	1	1				FOR DBPM3
---	54P-F1511-10-P3	FENDER, FRONT			1	1	1	WM6 FOR SMX,WM6
	54P-F1511-10-P7	FENDER, FRONT			1	1	1	FOR VPRM2
	54P-F1511-10-P1	FENDER, FRONT			1	1	1	FOR RM7
	54P-F1511-10-P8	FENDER, FRONT			1	1	1	FOR VPBC5
	54P-F1511-10-P9	FENDER, FRONT			1	1	1	FOR DBPM3
---	54P-F1511-10-P6	FENDER, FRONT				1		SMX FOR WM6
2	90109-06202	BOLT	3	3	3	3	3	
3	54P-F1569-80	GRAPHIC 1	1	1	1		1	UR FOR WM6
	54P-F1569-90	GRAPHIC 1	1	1	1		1	UR FOR VPRM2
	54P-F1569-A0	GRAPHIC 1	1	1	1		1	UR FOR RM7
---	54P-F1569-B0	GRAPHIC 1	1	1	1		1	UR FOR VPBC5
	54P-F1569-C0	GRAPHIC 1	1	1	1		1	UR FOR DBPM3
	54P-F1569-D0	GRAPHIC 1				1		UR FOR SMX
	54P-F1569-E0	GRAPHIC 1				1		UR FOR WM6
	54P-F1569-F0	GRAPHIC 1				1		UR FOR RM7
---	54P-F1569-G0	GRAPHIC 1				1		UR FOR VPBC5
	54P-F1569-H0	GRAPHIC 1				1		UR FOR VPRM2
4	54P-F1579-80	GRAPHIC 2	1	1	1		1	UR FOR WM6
	54P-F1579-90	GRAPHIC 2	1	1	1		1	UR FOR VPRM2
	54P-F1579-A0	GRAPHIC 2	1	1	1		1	UR FOR RM7
---	54P-F1579-B0	GRAPHIC 2	1	1	1		1	UR FOR VPBC5
	54P-F1579-C0	GRAPHIC 2	1	1	1		1	UR FOR DBPM3

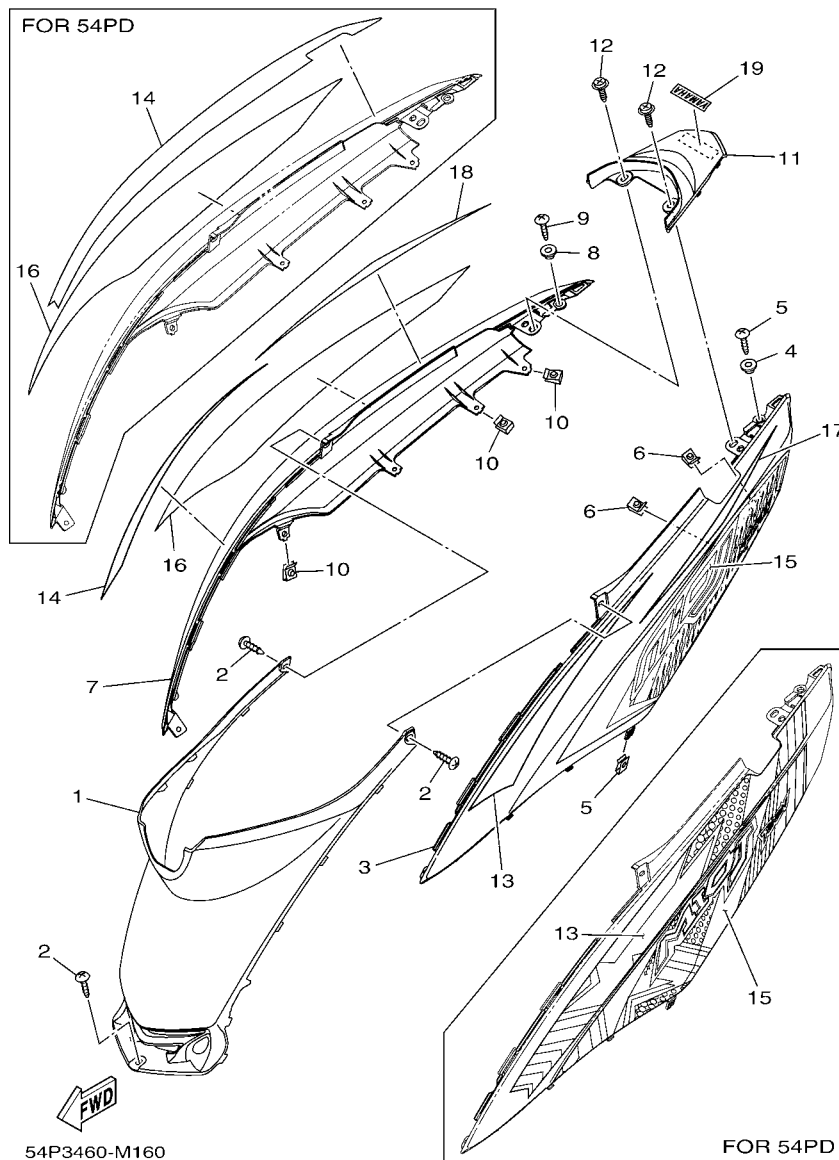


FIG. 16 SIDE COVER

REF. NO.	PART NO.	DESCRIPTION	54P3	54P4	54PC	54PD	54PE	REMARKS
1	54P-F172W-00	COVER	1	1	1	1	1	UR FOR C,D,E
	54P-F172W-10	COVER				1		UR FOR A
	54P-F172W-20	COVER				1		UR FOR B
2	97707-50016	SCREW, TRUSS HEAD TAPPING	3	3	3	3	3	
3	54P-F1711-00-P3	COVER, SIDE 1	1	1				UR WM6
	54P-F1711-00-P6	COVER, SIDE 1	1	1				UR SMX
	54P-F1711-10-P3	COVER, SIDE 1			1	1	1	UR WM6
	54P-F1711-10-P6	COVER, SIDE 1			1	1	1	UR SMX
4	90387-05820	COLLAR	1	1	1	1	1	
5	97707-50016	SCREW, TRUSS HEAD TAPPING	2	2	2	2	2	
6	90183-05807	NUT, SPRING	3	3	3	3	3	
7	54P-F1721-00-P3	COVER, SIDE 2	1	1				UR WM6
	54P-F1721-00-P6	COVER, SIDE 2	1	1				UR SMX
	54P-F1721-10-P3	COVER, SIDE 2			1	1	1	UR WM6
	54P-F1721-10-P6	COVER, SIDE 2			1	1	1	UR SMX
8	90387-05820	COLLAR	1	1	1	1	1	
9	97707-50016	SCREW, TRUSS HEAD TAPPING	2	2	2	2	2	
10	90183-05807	NUT, SPRING	3	3	3	3	3	
11	54P-F1731-00-P3	COVER, SIDE 3	1	1				UR WM6
	54P-F1731-00-P6	COVER, SIDE 3	1	1				UR SMX
	54P-F1731-10-P3	COVER, SIDE 3			1	1	1	UR WM6
	54P-F1731-10-P6	COVER, SIDE 3			1	1	1	UR SMX
12	90159-06810	SCREW, WITH WASHER	2	2	2	2	2	
13	54P-F173E-D0	GRAPHIC 1	1	1	1		1	UR FOR WM6
	54P-F173E-E0	GRAPHIC 1	1	1	1		1	UR FOR VPRM2
	54P-F173E-F0	GRAPHIC 1	1	1	1		1	UR FOR RM7
	54P-F173E-G0	GRAPHIC 1	1	1	1		1	UR FOR VPBC5

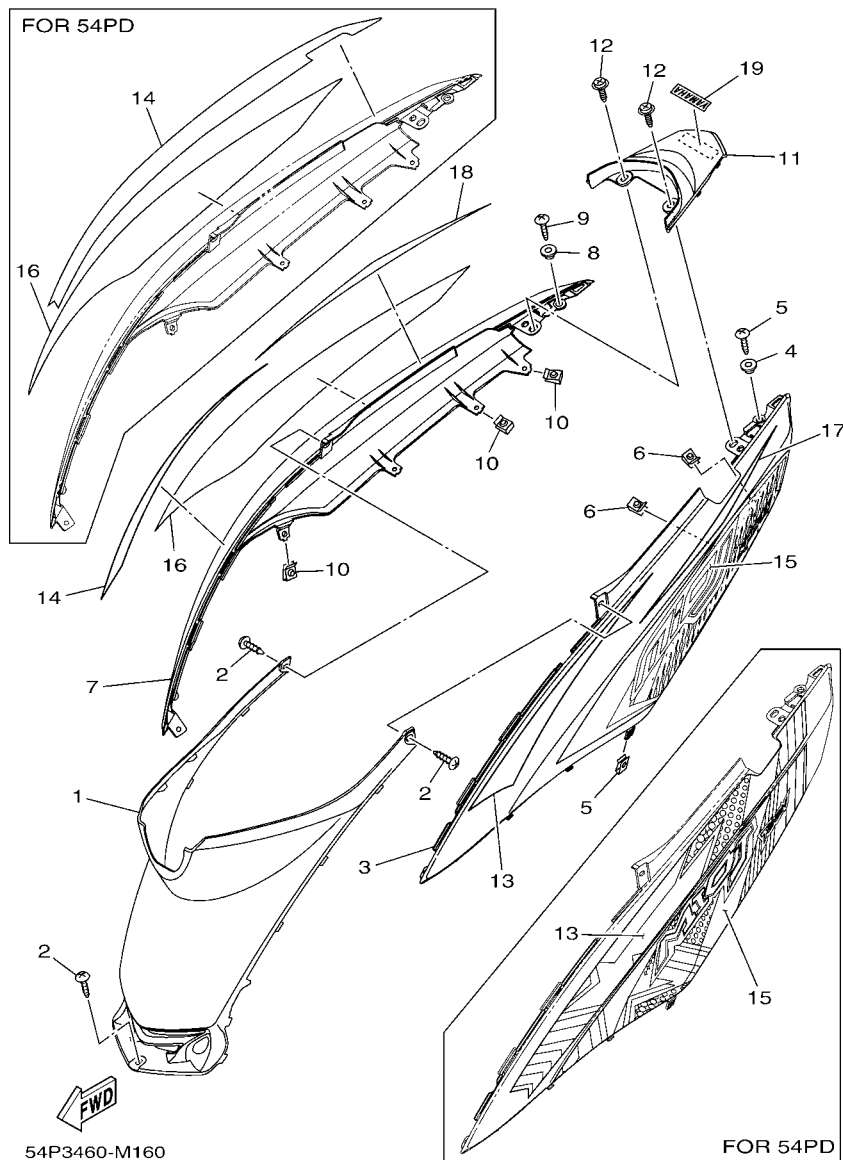


FIG. 16 SIDE COVER

REF. NO.	PART NO.	DESCRIPTION	54P3	54P4	54PC	54PD	54PE	REMARKS
13	54P-F173E-H0	GRAPHIC 1	1	1	1		1	UR FOR DBPM3
	54P-F173E-J0	GRAPHIC 1				1		UR FOR SMX
	54P-F173E-K0	GRAPHIC 1				1		UR FOR WM6
	54P-F173E-L0	GRAPHIC 1				1		UR FOR RM7
	54P-F173E-M0	GRAPHIC 1				1		UR FOR VPBC5
	54P-F173E-N0	GRAPHIC 1				1		UR FOR VPRM2
14	54P-F173F-D0	GRAPHIC 2	1	1	1		1	UR FOR WM6
	54P-F173F-E0	GRAPHIC 2	1	1	1		1	UR FOR VPRM2
	54P-F173F-F0	GRAPHIC 2	1	1	1		1	UR FOR RM7
	54P-F173F-G0	GRAPHIC 2	1	1	1		1	UR FOR VPBC5
	54P-F173F-H0	GRAPHIC 2	1	1	1		1	UR FOR DBPM3
	54P-F173F-J0	GRAPHIC 2				1		UR FOR SMX
	54P-F173F-K0	GRAPHIC 2				1		UR FOR WM6
	54P-F173F-L0	GRAPHIC 2				1		UR FOR RM7
	54P-F173F-M0	GRAPHIC 2				1		UR FOR VPBC5
	54P-F173F-N0	GRAPHIC 2				1		UR FOR VPRM2
15	54P-F174G-E0	GRAPHIC 3	1	1	1		1	UR FOR WM6
	54P-F174G-F0	GRAPHIC 3	1	1	1		1	UR FOR VPRM2
	54P-F174G-G0	GRAPHIC 3	1	1	1		1	UR FOR RM7
	54P-F174G-H0	GRAPHIC 3	1	1	1		1	UR FOR VPBC5
	54P-F174G-J0	GRAPHIC 3	1	1	1		1	UR FOR DBPM3
	54P-F174G-K0	GRAPHIC 3				1		UR FOR SMX
	54P-F174G-L0	GRAPHIC 3				1		UR FOR WM6
	54P-F174G-M0	GRAPHIC 3				1		UR FOR RM7
	54P-F174G-N0	GRAPHIC 3				1		UR FOR VPBC5
	54P-F174G-P0	GRAPHIC 3				1		UR FOR VPRM2
16	54P-F174H-E0	GRAPHIC 4	1	1	1		1	UR FOR WM6

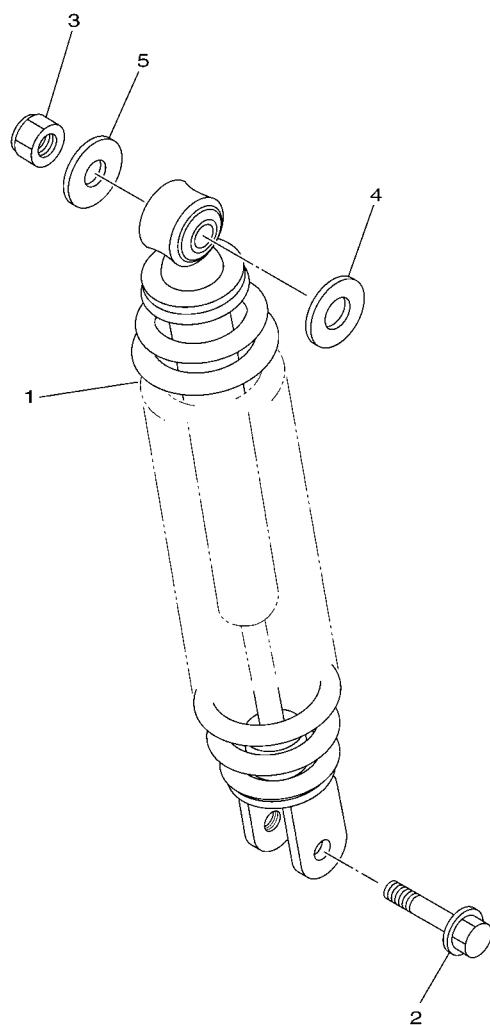


FIG. 17 REAR ARM & SUSPENSION

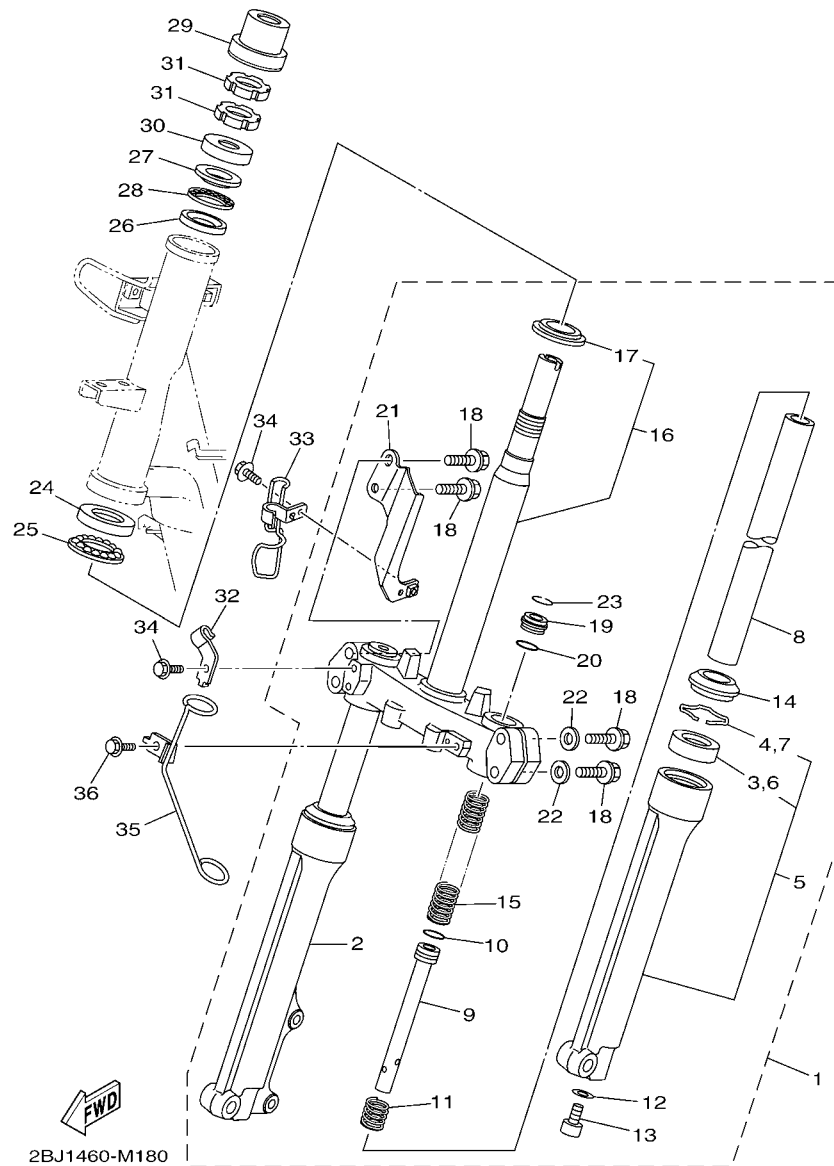


FIG. 18 STEERING

REF. NO.	PART NO.	DESCRIPTION	54P3	54P4	54PC	54PD	54PE	REMARKS
1	54P-F3100-10	FRONT FORK ASSY	1	1				
	54P-F3100-20	FRONT FORK ASSY			1	1	1	
2	54P-F3136-10	.TUBE, OUTER (R.H)	1	1	1	1	1	
3	3AY-F3145-00	..OIL SEAL	1	1	1	1	1	
4	5P0-F3156-00	..RING, SNAP	1	1	1	1	1	
5	54P-F3126-10	.TUBE, OUTER (L.H)	1	1	1	1	1	
6	3AY-F3145-00	..OIL SEAL	1	1	1	1	1	
7	5P0-F3156-00	..RING, SNAP	1	1	1	1	1	
8	54P-F3110-10	.INNER TUBE COMP.1	2	2	2	2	2	
9	28D-F3170-00	.CYLINDER COMP., FRONT FORK	2	2	2	2	2	
10	2JG-F3157-00	.RING, PISTON	2	2	2	2	2	
11	5D9-F3152-00	.SPRING, SUB	2	2	2	2	2	
12	2BU-F3158-00	.GASKET	2	2	2	2	2	
13	278-F3181-50	.BOLT, HEXAGON SOCKET HEAD	2	2	2	2	2	
14	5LM-F3144-00	.SEAL, DUST	2	2	2	2	2	
15	54P-F3141-10	.SPRING, FRONT FORK	2	2	2	2	2	
16	54P-F3340-10	.UNDER BRACKET COMP.	1	1				
	28D-F3340-00	.UNDER BRACKET COMP.			1	1	1	
17	4FP-F3411-10	..RACE, BALL 1	1	1				
	18G-23411-00	..RACE, BALL 1			1	1	1	
18	4D0-F3346-00	.BOLT 1	4	4	4	4	4	
19	1FC-F3111-10	.BOLT, CAP	2	2	2	2	2	
20	2JG-F3147-00	.O-RING	2	2	2	2	2	
21	54P-F334G-00	.BRACKET 1	1	1	1	1	1	
22	4D0-F3165-00	.WASHER, FELT	2	2	2	2	2	
23	5P0-F3153-00	.RING, SNAP	1	1	1	1	1	
24	1KL-F3412-10	RACE, BALL 2	1	1				

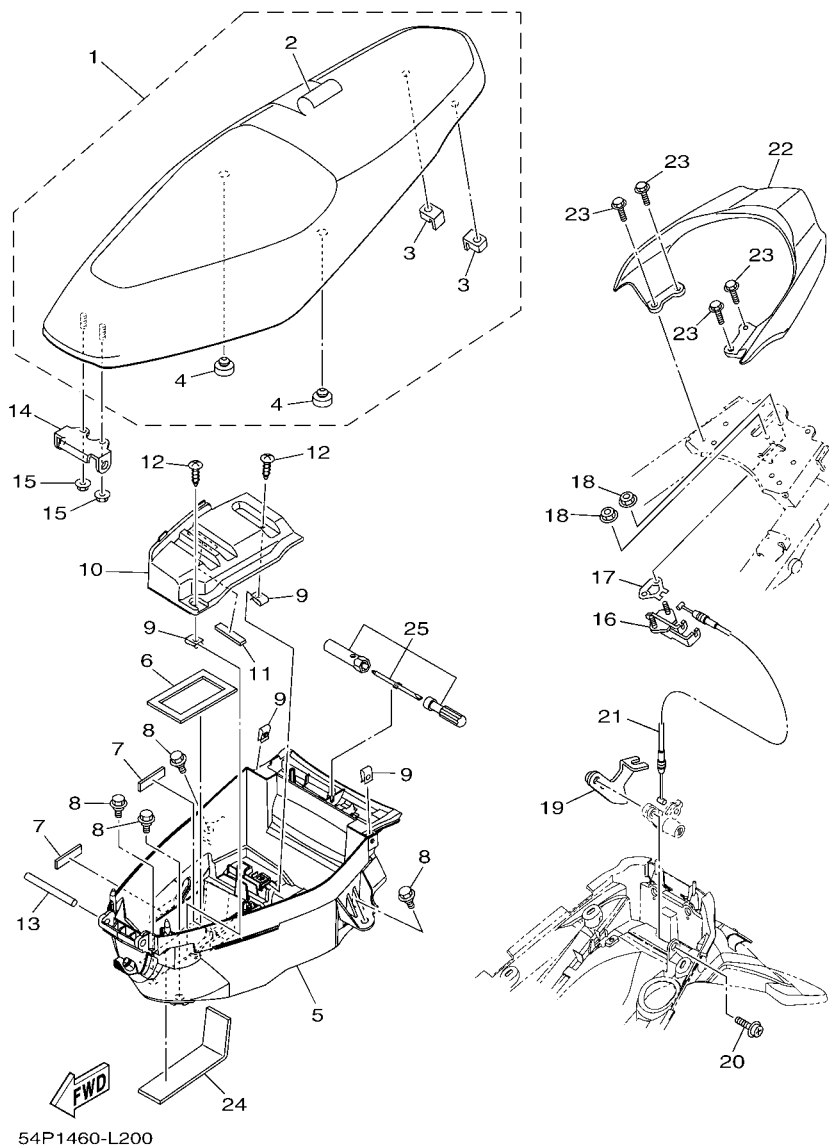


FIG. 20 SEAT

REF. NO.	PART NO.	DESCRIPTION	54P3	54P4	54PC	54PD	54PE	REMARKS
1	54P-F4730-00	DOUBLE SEAT ASSY	1	1	1	1	1	
2	54P-F470F-00	.SEAT COVER COMP.	1	1	1	1	1	
3	5TL-F4741-00	.PAD, SEAT	2	2	2	2	2	
4	3C1-F4741-00	.PAD, SEAT	2	2	2	2	2	
5	54P-F4704-00	BOX ASSY	1	1	1	1	1	
6	1KP-H2176-00	DAMPER	1	1	1	1	1	
7	90520-03806	DAMPER, PLATE	2	2	2	2	2	
8	90109-06202	BOLT	4	4	4	4	4	
9	90183-05807	NUT, SPRING	4	4	4	4	4	
10	54P-H2129-00	COVER, BATTERY	1	1	1	1	1	
11	90520-03806	DAMPER, PLATE	1	1	1	1	1	
12	97707-50012	SCREW, TRUSS HEAD TAPPING	2	2	2	2	2	
13	5TL-F4727-00	PIN, SEAT FITTING	1	1	1	1	1	
14	54P-F4726-00	HINGE, SEAT	1	1	1	1	1	
15	95702-06500	NUT, FLANGE	2	2	2	2	2	
16	5TL-F4780-00	SEAT LOCK ASSY	1	1	1	1	1	
17	5TL-F4792-00	PLATE	1	1	1	1	1	
18	95702-06500	NUT, FLANGE	2	2	2	2	2	
19	54P-F117K-00	STAY, LOCK	1	1	1	1	1	
20	90159-06054	SCREW, WITH WASHER	1	1	1	1	1	
21	54P-F478E-00	CABLE, SEAT LOCK	1	1	1	1	1	
22	54P-F4773-00-P2	HANDLE, SEAT	1	1	1		1	UR BMC
	54P-F4773-00-P3	HANDLE, SEAT	1	1	1	1	1	UR VPRM2
	54P-F4773-00-P0	HANDLE, SEAT	1	1	1		1	UR WM6
	54P-F4773-00-P7	HANDLE, SEAT				1		UR DRMK
	54P-F4773-00-P5	HANDLE, SEAT				1		UR LCM4
	54P-F4773-00-P6	HANDLE, SEAT				1		UR VPBC5

[illegible]

[illegible]

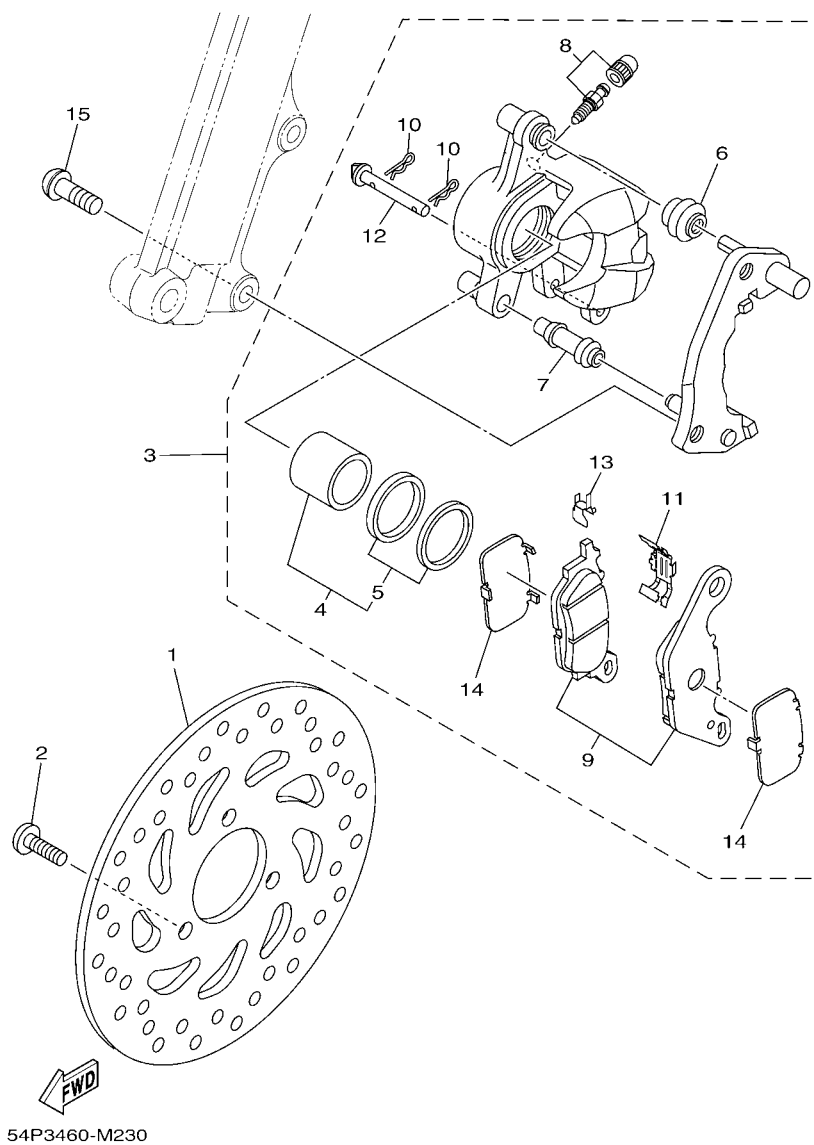


FIG. 23 FRONT BRAKE CALIPER

[illegible]

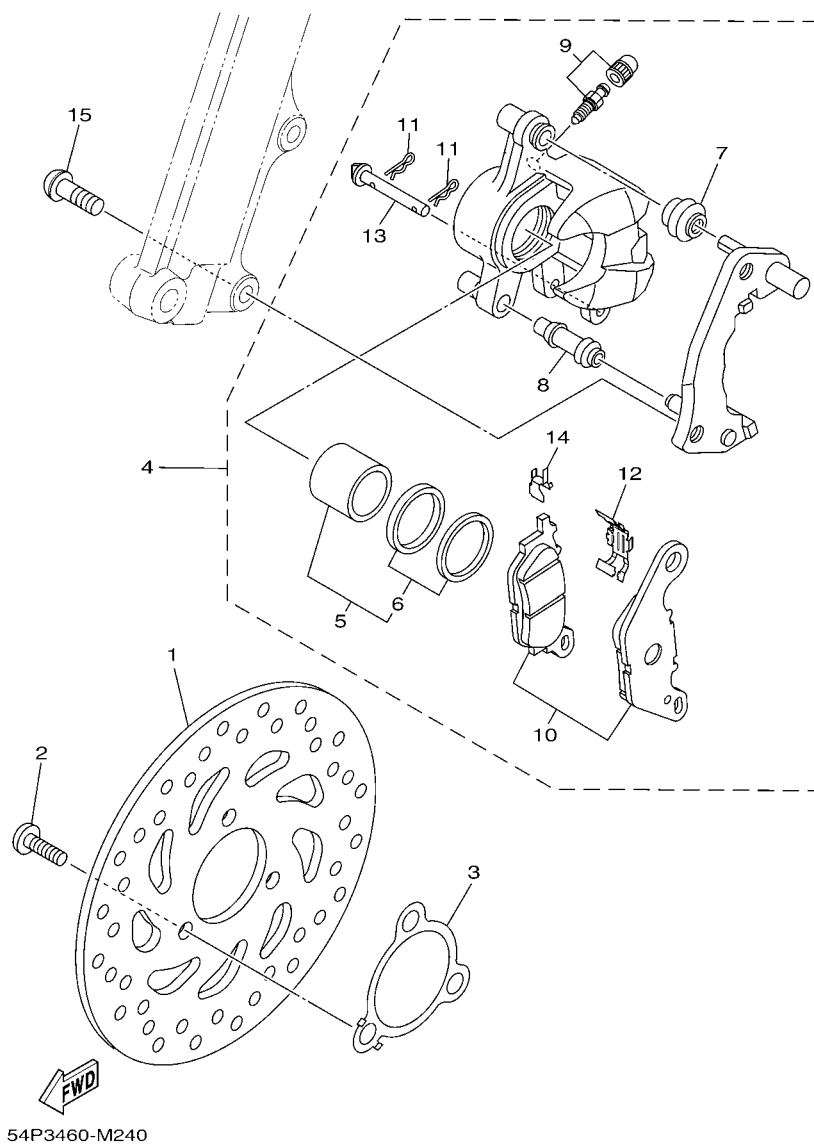


FIG. 24 FRONT BRAKE CALIPER 2

[illegible]

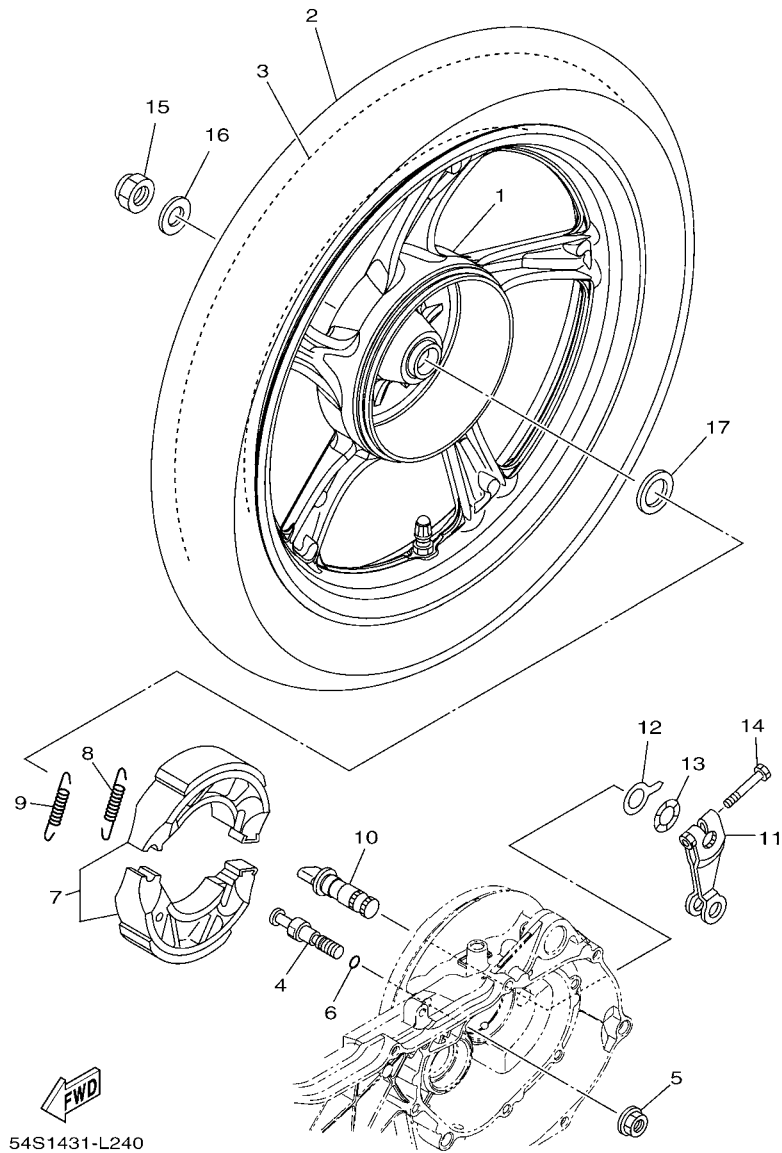


FIG. 25 REAR WHEEL FOR CAST WHEEL

REF. NO.	PART NO.	DESCRIPTION	54P3	54P4	54PC	54PD	54PE	REMARKS
1	54P-F5338-20-33	CAST WHEEL, REAR		1	1			YB
	54P-F5338-20-P0	CAST WHEEL, REAR				1		WSA
2	94108-14802	TIRE (80/90-14M/C 40P NR76)		1	1	1		INOUE
3	94208-14802	TUBE (80/90-14M/C TR4)		1	1	1		INOUE
4	54P-F5326-00	PIN, PIVOT		1	1	1		
5	95702-10500	NUT, FLANGE		1	1	1		
6	93210-07802	O-RING		1	1	1		
7	1LB-F530K-00	BRAKE SHOE SET		1	1	1		
8	90506-12001	SPRING, TENSION		1	1	1		
9	90506-15001	SPRING, TENSION		1	1	1		
10	54P-F5351-00	CAMSHAFT		1				
	5MX-F5351-00	CAMSHAFT			1	1		
11	5LW-F5355-00	LEVER, CAMSHAFT		1	1	1		
12	5MX-F533A-00	PLATE, INDICATOR		1	1	1		
13	90206-14093	WASHER, WAVE		1	1	1		
14	90101-06046	BOLT		1	1	1		
15	90185-14814	NUT, SELF-LOCKING		1	1	1		
16	90201-14820	WASHER, PLATE		1	1	1		
17	90201-20276	WASHER, PLATE (T=1.0)		1	1	1		

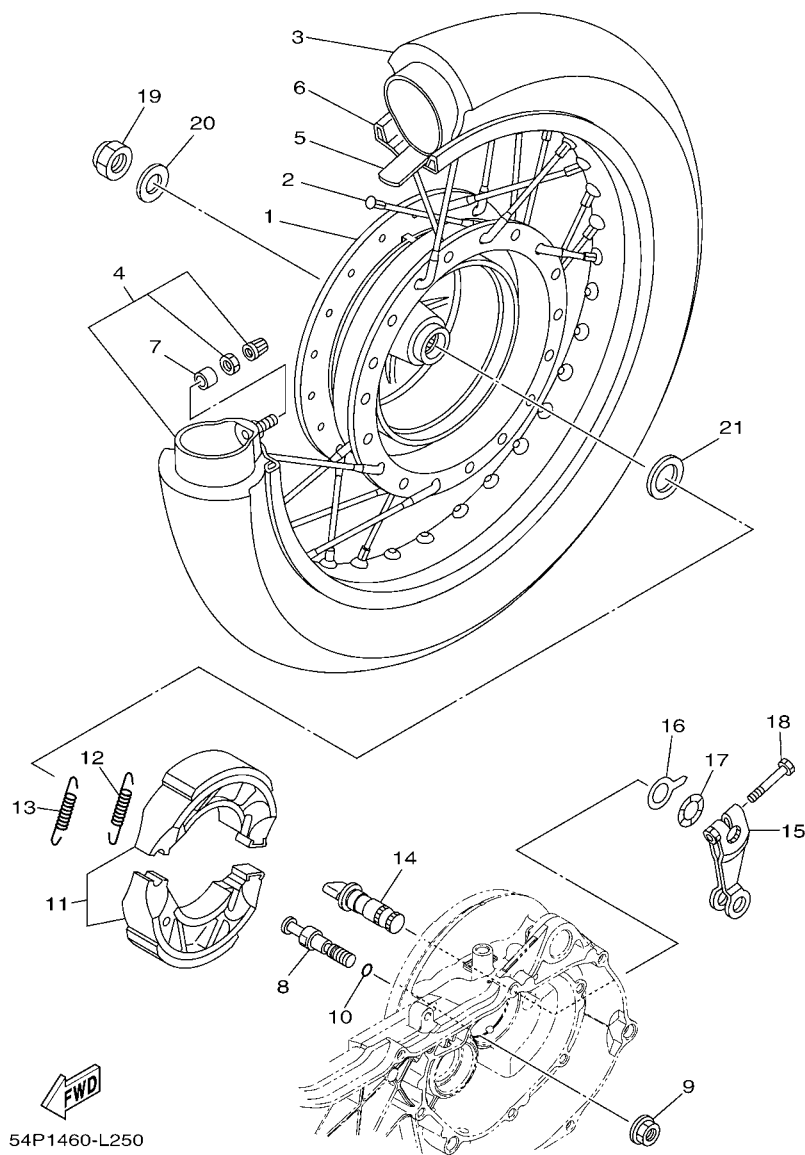


FIG. 26 REAR WHEEL FOR SPOKE WHEEL

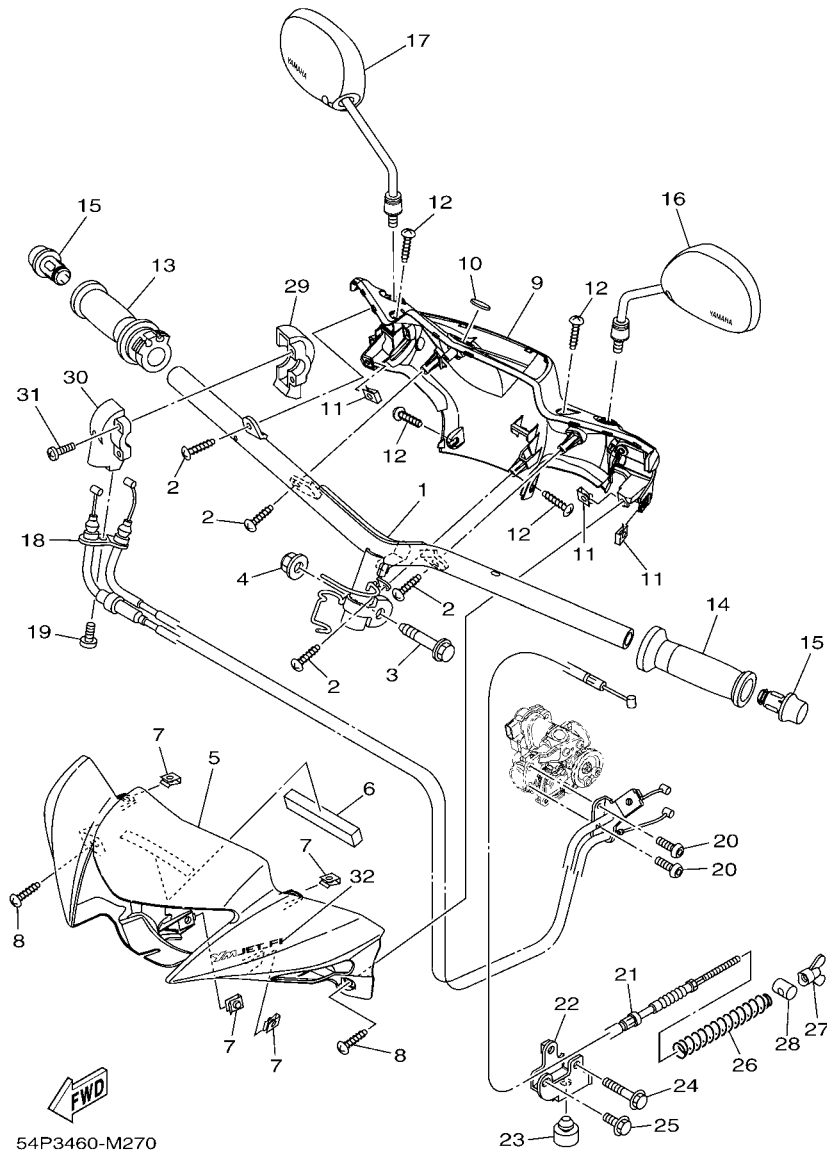


FIG. 27 STEERING HANDLE & CABLE

REF. NO.	PART NO.	DESCRIPTION	54P3	54P4	54PC	54PD	54PE	REMARKS
1	54P-F6110-00	HANDLE COMP.	1	1	1	1	1	
2	97707-50016	SCREW, TRUSS HEAD TAPPING	4	4	4	4	4	
3	90105-10036	BOLT, FLANGE	1	1	1	1	1	
4	90185-10815	NUT, SELF-LOCKING	1	1	1	1	1	
5	54P-F6143-00-P3	COVER, HANDLE UPPER 1	1	1				FOR WM6
5	54P-F6143-00-P7	COVER, HANDLE UPPER 1	1	1				FOR VPRM2
	54P-F6143-00-P1	COVER, HANDLE UPPER 1	1	1				FOR RM7
	54P-F6143-00-P8	COVER, HANDLE UPPER 1	1	1				FOR VPBC5
	54P-F6143-00-P9	COVER, HANDLE UPPER 1	1	1				FOR DBPM3
	54P-F6143-10-P3	COVER, HANDLE UPPER 1			1	1	1	WM6 FOR SMX,WM6
5	54P-F6143-10-P1	COVER, HANDLE UPPER 1			1	1	1	FOR RM7
	54P-F6143-10-P7	COVER, HANDLE UPPER 1			1	1	1	FOR VPRM2
	54P-F6143-10-P8	COVER, HANDLE UPPER 1			1	1	1	FOR VPBC5
	54P-F6143-10-P9	COVER, HANDLE UPPER 1			1		1	FOR DBPM3
	54P-F6143-10-P6	COVER, HANDLE UPPER 1				1		SMX FOR WM6
6	90520-20806	DAMPER, PLATE	1	1	1	1	1	
7	90183-05807	NUT, SPRING	4	4	4	4	4	
8	97707-50016	SCREW, TRUSS HEAD TAPPING	2	2	2	2	2	
9	54P-F6145-00	COVER, HAND UPPER 2	1	1	1	1	1	UR FOR C,D,E
	54P-F6145-10	COVER, HAND UPPER 2				1		UR FOR A
	54P-F6145-20	COVER, HAND UPPER 2				1		UR FOR B
10	14D-F3108-00	EMBLEM	1	1	1	1	1	
11	90183-05807	NUT, SPRING	3	3	3	3	3	
12	97707-50016	SCREW, TRUSS HEAD TAPPING	4	4	4	4	4	
13	44D-F6240-00	GRIP ASSY	1	1	1	1	1	
14	44D-F6241-00	GRIP	1	1	1	1	1	
15	54P-F6246-00	END, GRIP	2	2	2	2	2	

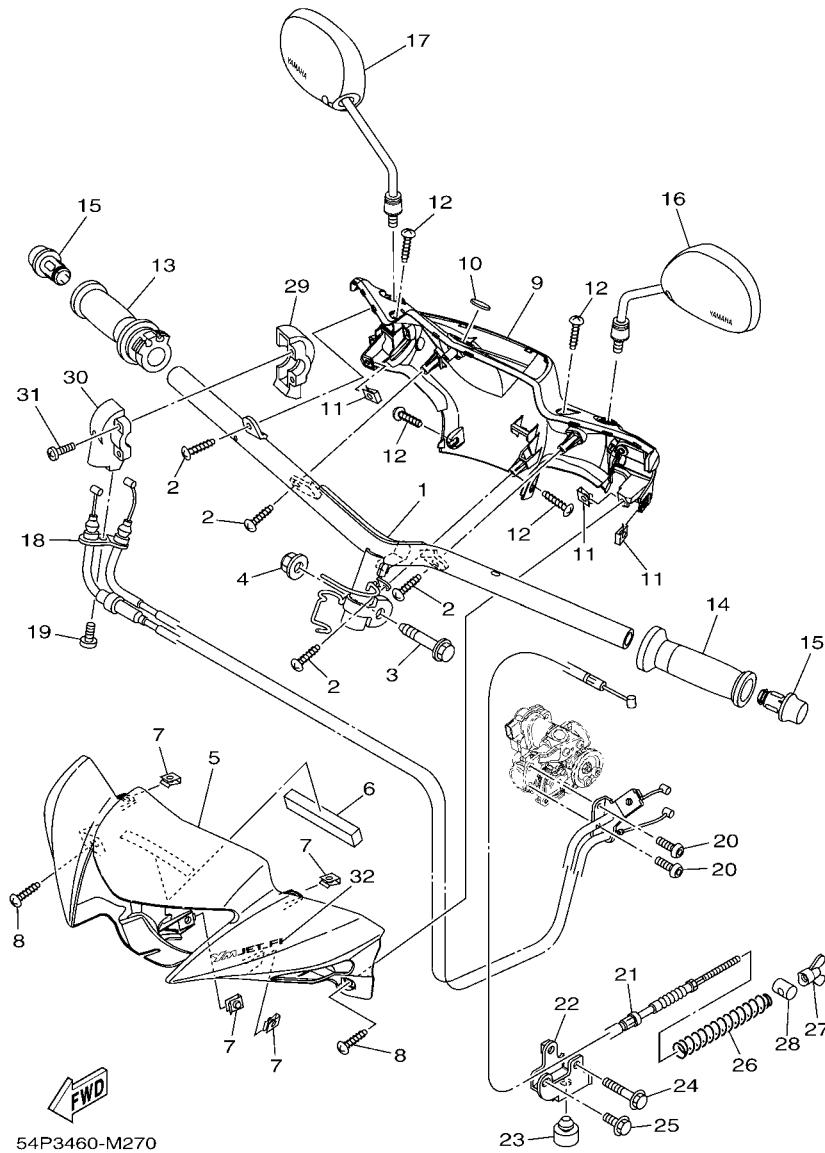


FIG. 27 STEERING HANDLE & CABLE

REF. NO.	PART NO.	DESCRIPTION	54P3	54P4	54PC	54PD	54PE	REMARKS
16	54P-F6280-00	REAR VIEW MIRROR ASSY (LEFT)	1	1				
	2P2-F6280-11	REAR VIEW MIRROR ASSY (LEFT)			1	1	1	
17	54P-F6290-00	REAR VIEW MIRROR ASSY (RIGHT)	1	1				
	2P2-F6290-11	REAR VIEW MIRROR ASSY (RIGHT)			1	1	1	
18	54P-F6301-20	THROTTLE CABLE ASSY	1	1	1	1	1	UR
	54P-F6301-30	THROTTLE CABLE ASSY	1	1	1	1	1	UR
19	92012-05016	BOLT, BUTTON HEAD	1	1	1	1	1	
20	92012-05010	BOLT, BUTTON HEAD	2	2	2	2	2	
21	54P-F6351-20	CABLE, BRAKE	1	1				
	54P-F6351-00	CABLE, BRAKE			1	1	1	
22	54P-F637G-00	HOLDER, WIRE	1	1	1	1	1	
23	54P-F7114-00	STOPPER, MAIN STAND	1	1	1	1	1	
24	95022-06040	BOLT, FLANGE	1	1	1	1	1	
25	95022-06014	BOLT, FLANGE	1	1	1	1	1	
26	90501-16003	SPRING, COMPRESSION	1	1	1	1	1	
27	90175-06013	NUT, WING	1	1	1	1	1	
28	90249-12008	PIN	1	1	1	1	1	
29	54P-F6281-00	CAP, GRIP UPPER	1	1	1	1	1	
30	54P-F6282-00	CAP, GRIP UNDER	1	1	1	1	1	
31	98502-05025	SCREW, PAN HEAD	2	2	2	2	2	
32	54P-F6192-60	GRAPHIC 1				1		UR FOR SMX
	54P-F6192-70	GRAPHIC 1				1		UR FOR WM6
	54P-F6192-80	GRAPHIC 1				1		UR FOR RM7
	54P-F6192-90	GRAPHIC 1				1		UR FOR VPBC5
	54P-F6192-A0	GRAPHIC 1				1		UR FOR VPRM2

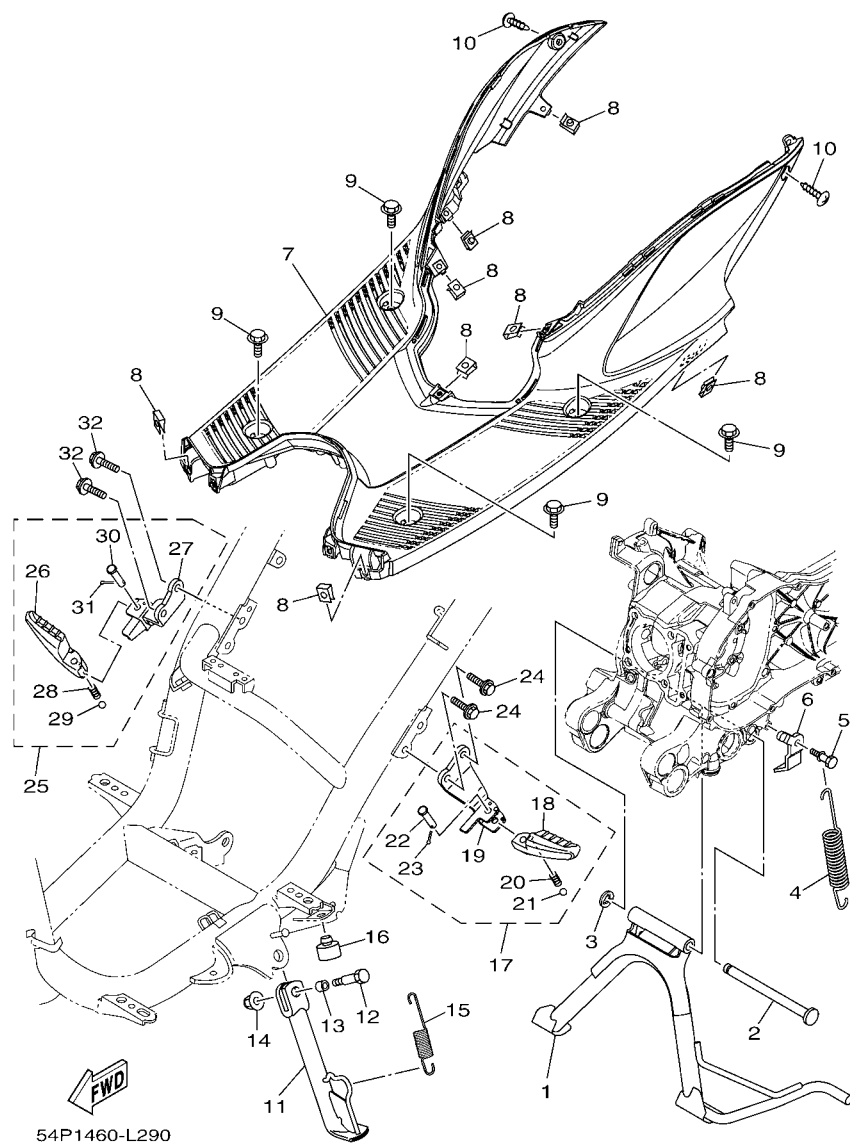


FIG. 29 STAND & FOOTREST

REF. NO.	PART NO.	DESCRIPTION	54P3	54P4	54PC	54PD	54PE	REMARKS
1	54P-F7111-10	STAND, MAIN	1	1				
	54P-F7111-01	STAND, MAIN			1	1	1	
2	54P-F7112-00	SHAFT, MAIN STAND	1	1	1	1	1	
3	99002-08600	CLIP	1	1	1	1	1	
4	90506-35821	SPRING, TENSION	1	1	1	1	1	
5	5LW-F7254-00	HOOK	1	1	1	1	1	
6	54P-F7267-00	GUIDE, WIRE	1	1	1	1	1	
7	54P-F7481-00	BOARD, FOOTREST	1	1	1	1	1	
8	90183-05807	NUT, SPRING	8	8	8	8	8	
9	90119-06044	BOLT, WITH WASHER	4	4	4	4	4	
10	97707-50016	SCREW, TRUSS HEAD TAPPING	2	2	2	2	2	
11	54P-F7311-00	STAND, SIDE	1	1	1	1	1	
12	90101-08847	BOLT	1	1	1	1	1	
13	90387-08820	COLLAR	1	1	1	1	1	
14	95602-08200	NUT, SELF-LOCKING	1	1	1	1	1	
15	90506-20514	SPRING, TENSION	1	1	1	1	1	
16	4YY-F7114-00	STOPPER, MAIN STAND	1	1	1	1	1	
17	54P-F7430-00	REAR FOOTREST ASSY 1	1	1	1	1	1	
18	54P-F7431-00	.FOOTREST, REAR 1	1	1	1	1	1	
19	54P-F7432-00	.BRACKET 1	1	1	1	1	1	
20	90501-12743	.SPRING, COMPRESSION	1	1	1	1	1	
21	93501-04843	.BALL	1	1	1	1	1	
22	91701-08035	.PIN	1	1	1	1	1	
23	91401-25015	.PIN, COTTER	1	1	1	1	1	
24	95802-08030	BOLT, FLANGE	2	2	2	2	2	
25	54P-F7440-00	REAR FOOTREST ASSY 2	1	1	1	1	1	
26	54P-F7441-00	.FOOTREST, REAR 2	1	1	1	1	1	

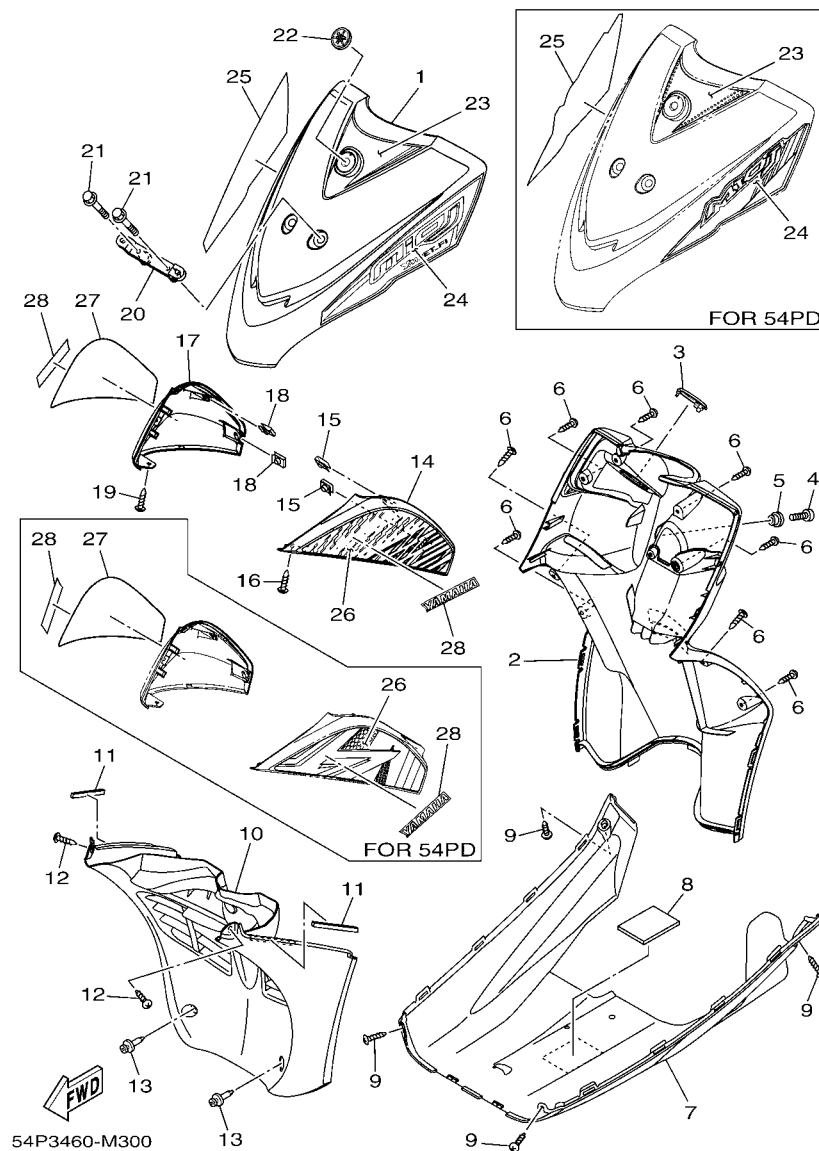


FIG. 30 LEG SHIELD

REF. NO.	PART NO.	DESCRIPTION	54P3	54P4	54PC	54PD	54PE	REMARKS
1	54P-F8311-00-P3	LEG SHIELD 1	1	1				UR WM6
	54P-F8311-00-P7	LEG SHIELD 1	1	1				UR VPRM2
	54P-F8311-00-P1	LEG SHIELD 1	1	1				UR RM7
	54P-F8311-00-P8	LEG SHIELD 1	1	1				UR VPBC5
	54P-F8311-00-P9	LEG SHIELD 1	1	1				UR DBPM3
---	54P-F8311-10-P3	LEG SHIELD 1				1	1	UR WM6
	54P-F8311-10-P7	LEG SHIELD 1				1	1	UR VPRM2
	54P-F8311-10-P1	LEG SHIELD 1				1	1	UR RM7
	54P-F8311-10-P8	LEG SHIELD 1				1	1	UR VPBC5
	54P-F8311-10-P9	LEG SHIELD 1				1	1	UR DBPM3
---	54P-F8311-10-P6	LEG SHIELD 1					1	UR SMX
2	54P-F8300-00	LEG SHIELD ASSY	1	1	1	1	1	UR FOR C,D,E
	54P-F8300-10	LEG SHIELD ASSY					1	UR FOR A
	54P-F8300-20	LEG SHIELD ASSY					1	UR FOR B
3	54P-F8365-00	COVER	1	1	1	1	1	UR FOR C,D,E
---	54P-F8365-10	COVER					1	UR FOR A
	54P-F8365-20	COVER					1	UR FOR B
4	98907-06012	SCREW, BIND	1	1	1	1	1	
5	90387-07811	COLLAR	1	1	1	1	1	
6	97707-50016	SCREW, TRUSS HEAD TAPPING	8	8	8	8	8	
---	54P-F8385-00	COVER, UNDER	1	1	1	1	1	
8	4ST-F1638-00	DAMPER 1	1	1	1	1	1	
9	97707-50016	SCREW, TRUSS HEAD TAPPING	4	4	4	4	4	
10	54P-F1552-00	FENDER, INNER	1	1	1	1	1	
11	90520-03811	DAMPER, PLATE	2	2	2	2	2	
---	97707-50016	SCREW, TRUSS HEAD TAPPING	2	2	2	2	2	
13	90269-06812	RIVET	2	2	2	2	2	

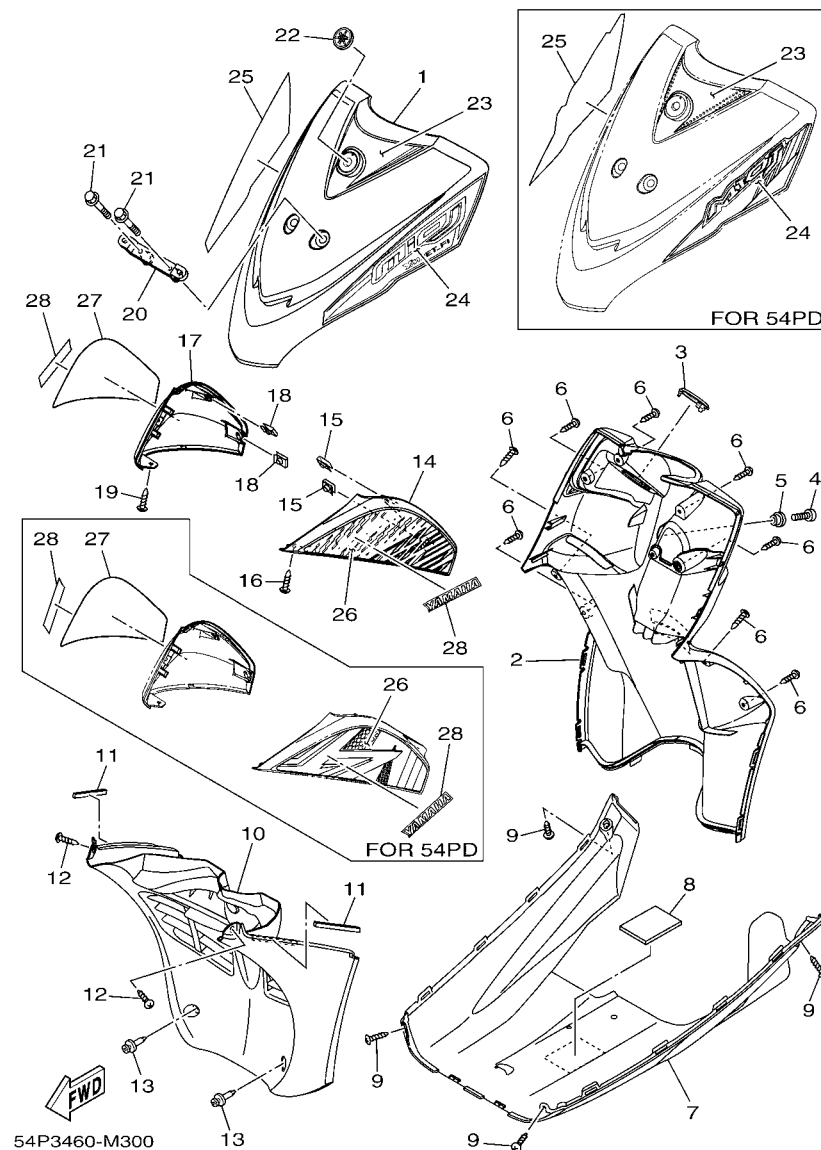


FIG. 30 LEG SHIELD

REF. NO.	PART NO.	DESCRIPTION	54P3	54P4	54PC	54PD	54PE	REMARKS
14	54P-F83D3-00-P6	COVER, FLASHER 1	1	1				UR SMX
	54P-F83D3-00-P3	COVER, FLASHER 1	1	1				UR WM6
	54P-F83D3-10-P6	COVER, FLASHER 1			1	1	1	UR SMX
	54P-F83D3-10-P3	COVER, FLASHER 1			1	1	1	UR WM6
	54P-F83D3-10-P1	COVER, FLASHER 1				1		UR RM7
	54P-F83D3-10-P7	COVER, FLASHER 1				1		UR VPBC5
	54P-F83D3-10-P8	COVER, FLASHER 1				1		UR VPRM2
15	90183-05807	NUT, SPRING	2	2	2	2	2	
16	97707-50016	SCREW, TRUSS HEAD TAPPING	1	1	1	1	1	
17	54P-F83D4-00-P6	COVER, FLASHER 2	1	1				UR SMX
	54P-F83D4-00-P3	COVER, FLASHER 2	1	1				UR WM6
	54P-F83D4-10-P6	COVER, FLASHER 2			1	1	1	UR SMX
	54P-F83D4-10-P3	COVER, FLASHER 2			1	1	1	UR WM6
	54P-F83D4-10-P1	COVER, FLASHER 2				1		UR RM7
	54P-F83D4-10-P7	COVER, FLASHER 2				1		UR VPBC5
	54P-F83D4-10-P8	COVER, FLASHER 2				1		UR VPRM2
18	90183-05807	NUT, SPRING	2	2	2	2	2	
19	97707-50016	SCREW, TRUSS HEAD TAPPING	1	1	1	1	1	
20	54P-H454E-00	BRACKET, NUMBER PLATE	1	1	1	1	1	
21	95802-06030	BOLT, FLANGE	2	2	2	2	2	
22	40D-F1737-00	EMBLEM	1	1	1	1	1	
23	54P-F83GF-30	GRAPHIC, 12	1	1	1		1	UR FOR WM6
	54P-F83GF-40	GRAPHIC, 12	1	1	1		1	UR FOR VPRM2
	54P-F83GF-50	GRAPHIC, 12	1	1	1		1	UR FOR RM7
	54P-F83GF-60	GRAPHIC, 12	1	1	1		1	UR FOR VPBC5
	54P-F83GF-70	GRAPHIC, 12	1	1	1		1	UR FOR DBPM3
	54P-F83GF-80	GRAPHIC, 12					1	UR FOR SMX

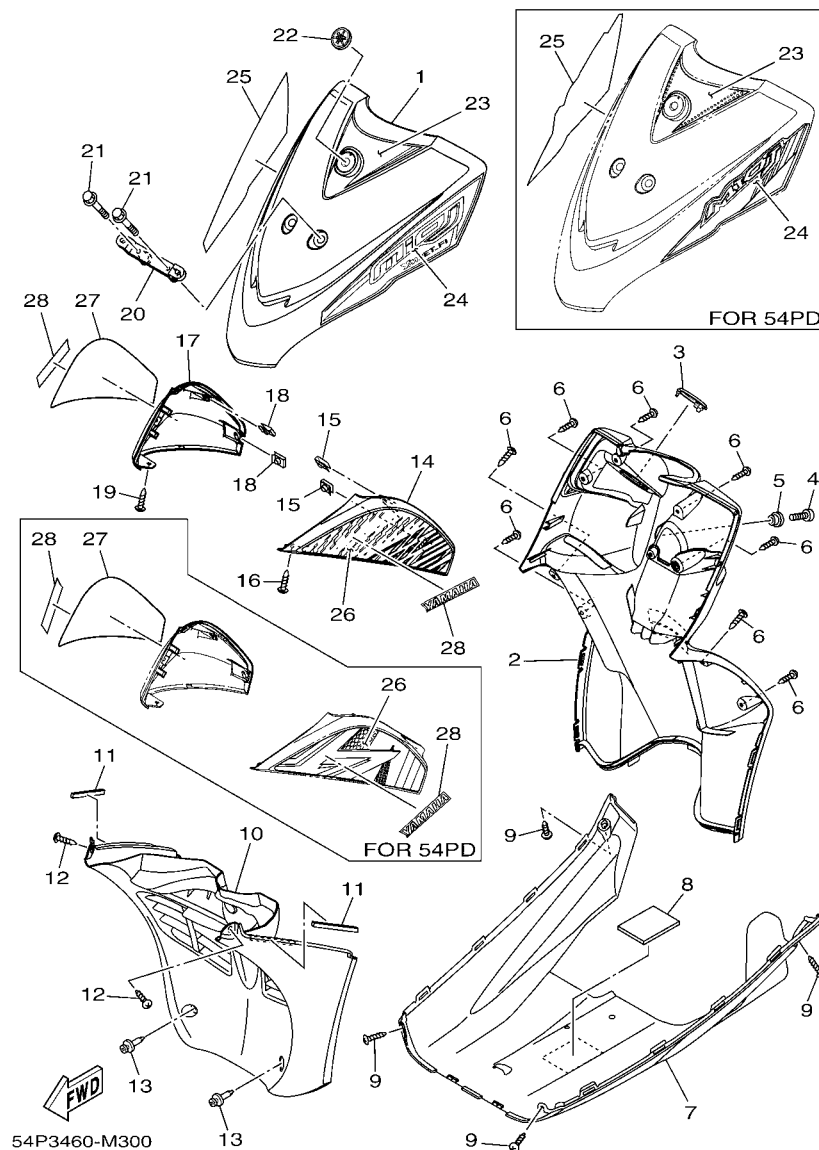


FIG. 30 LEG SHIELD

REF. NO.	PART NO.	DESCRIPTION	54P3	54P4	54PC	54PD	54PE	REMARKS
23	54P-F83GF-90	GRAPHIC, 12				1		UR FOR WM6
	54P-F83GF-A0	GRAPHIC, 12				1		UR FOR RM7
	54P-F83GF-B0	GRAPHIC, 12				1		UR FOR VPBC5
	54P-F83GF-C0	GRAPHIC, 12				1		UR FOR VPRM2
24	54P-F832L-G0	GRAPHIC, 13	1	1	1	1		UR FOR WM6
	54P-F832L-H0	GRAPHIC, 13	1	1	1	1		UR FOR VPRM2
	54P-F832L-J0	GRAPHIC, 13	1	1	1	1		UR FOR RM7
	54P-F832L-K0	GRAPHIC, 13	1	1	1	1		UR FOR VPBC5
	54P-F832L-L0	GRAPHIC, 13	1	1	1	1		UR FOR DBPM3
	54P-F832L-M0	GRAPHIC, 13				1		UR FOR SMX
	54P-F832L-N0	GRAPHIC, 13				1		UR FOR WM6
	54P-F832L-P0	GRAPHIC, 13				1		UR FOR RM7
	54P-F832L-R0	GRAPHIC, 13				1		UR FOR VPBC5
	54P-F832L-S0	GRAPHIC, 13				1		UR FOR VPRM2
25	54P-F831Y-G0	GRAPHIC, 14	1	1	1	1		UR FOR WM6
	54P-F831Y-H0	GRAPHIC, 14	1	1	1	1		UR FOR VPRM2
	54P-F831Y-J0	GRAPHIC, 14	1	1	1	1		UR FOR RM7
	54P-F831Y-K0	GRAPHIC, 14	1	1	1	1		UR FOR VPBC5
	54P-F831Y-L0	GRAPHIC, 14	1	1	1	1		UR FOR DBPM3
	54P-F831Y-M0	GRAPHIC, 14				1		UR FOR SMX
	54P-F831Y-N0	GRAPHIC, 14				1		UR FOR WM6
	54P-F831Y-P0	GRAPHIC, 14				1		UR FOR RM7
	54P-F831Y-R0	GRAPHIC, 14				1		UR FOR VPBC5
	54P-F831Y-S0	GRAPHIC, 14				1		UR FOR VPRM2
26	54P-F832B-E0	GRAPHIC, 15	1	1	1	1		UR FOR A
	54P-F832B-F0	GRAPHIC, 15	1	1	1	1		UR FOR B
	54P-F832B-G0	GRAPHIC, 15	1	1	1	1		UR FOR C,D,E

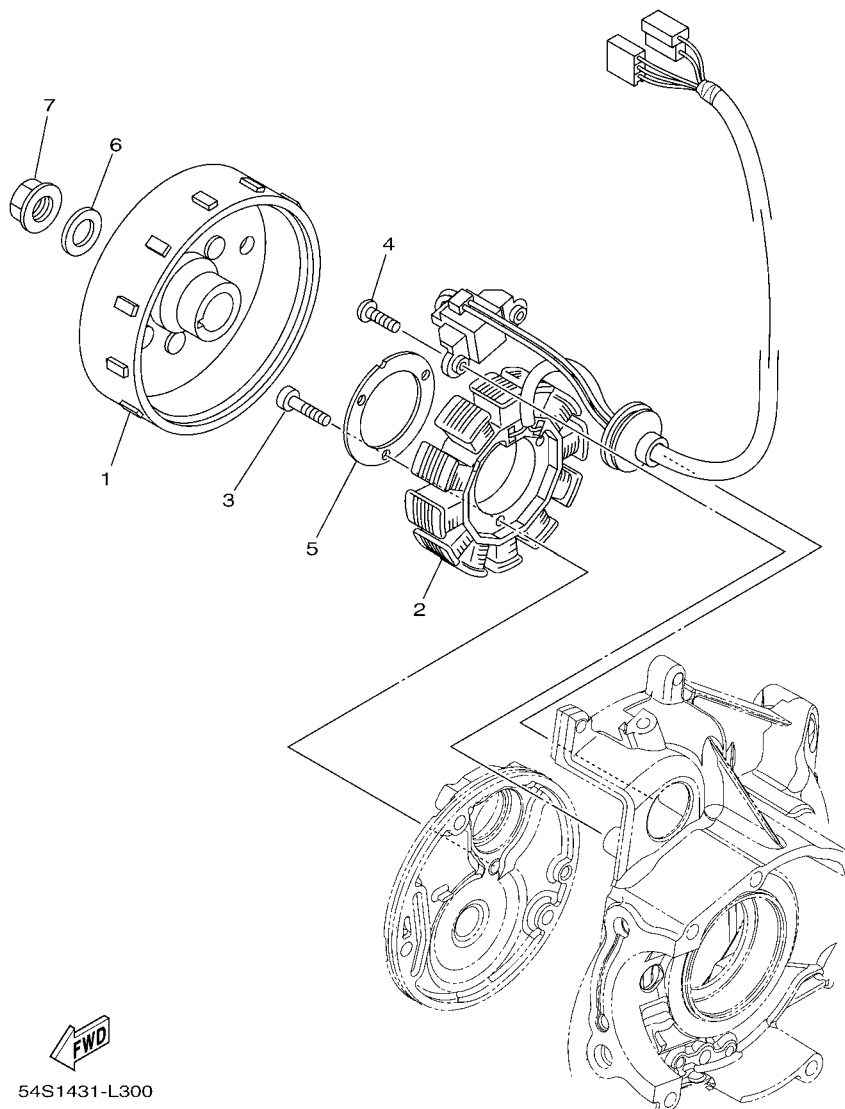


FIG. 31 GENERATOR

REF. NO.	PART NO.	DESCRIPTION	54P3	54P4	54PC	54PD	54PE	REMARKS
1	54P-H1450-00	ROTOR ASSY	1	1	1	1	1	
2	54P-H1410-10	STATOR ASSY	1	1	1	1	1	
3	91312-06018	BOLT	3	3	3	3	3	
4	98502-06016	SCREW, PAN HEAD	2	2	2	2	2	
5	54P-H132G-00	PLATE	1	1	1	1	1	
6	90201-12688	WASHER, PLATE	1	1	1	1	1	
7	90179-12004	NUT	1	1	1	1	1	

[illegible]

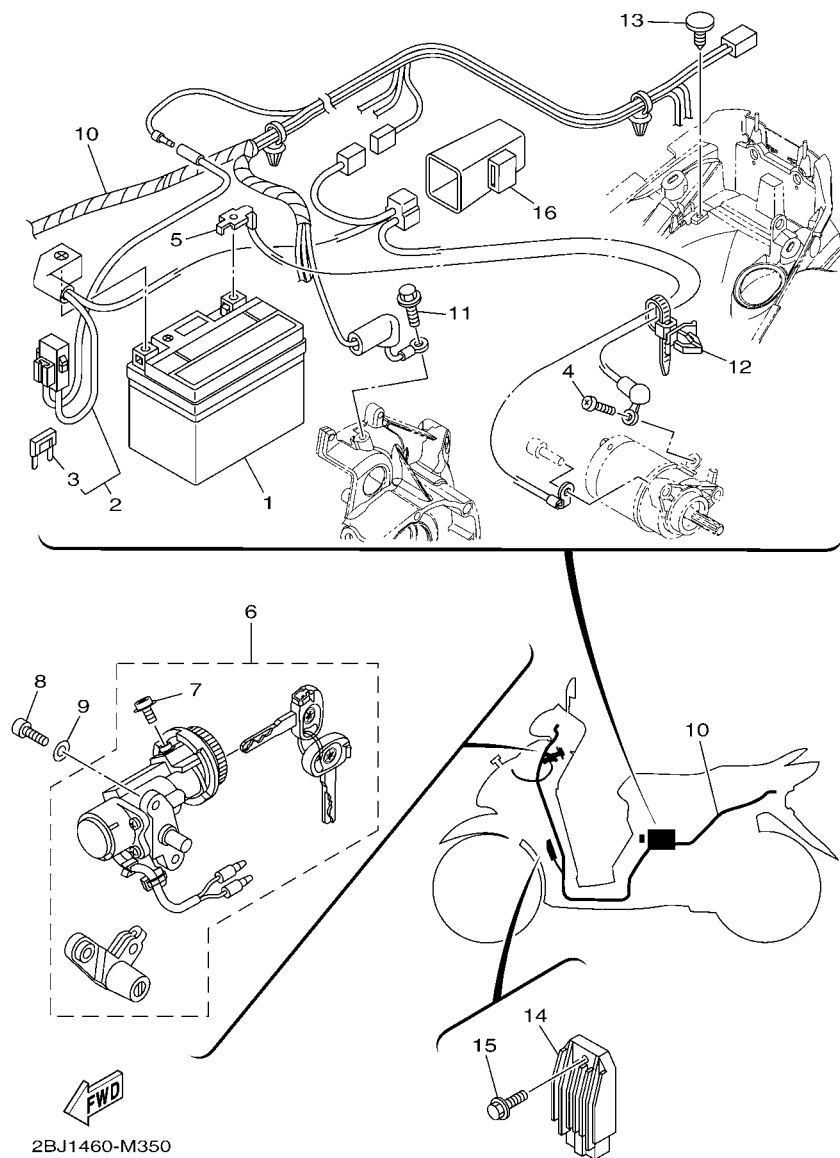


FIG. 38 ELECTRICAL 1

REF. NO.	PART NO.	DESCRIPTION	54P3	54P4	54PC	54PD	54PE	REMARKS
1	14D-H2100-00	BATTERY ASSY (YUASA YTZ4V)	1	1	1	1	1	UR
	14D-H2100-10	BATTERY ASSY (GS GZ4V)	1	1	1	1	1	UR
2	54P-H2115-00	WIRE, PLUS LEAD	1	1	1	1	1	
3	54P-H2151-00	.FUSE (15A)	1	1	1	1	1	
4	98902-05008	SCREW, BIND	1	1	1	1	1	
5	54P-H2116-00	WIRE, MINUS LEAD	1	1	1	1	1	
6	54P-XH252-00	MAIN SWITCH SUB ASSY.	1	1	1	1	1	
7	97602-05208	.SCREW, PAN HEAD WITH WASHER	1	1	1	1	1	
8	91312-06014	BOLT	2	2	2	2	2	
9	92902-06600	WASHER, PLATE	2	2	2	2	2	
10	54P-H2590-20	WIRE HARNESS ASSY	1	1	1	1	1	UR
	54P-H2590-30	WIRE HARNESS ASSY	1	1	1	1	1	UR
11	95022-06012	BOLT, FLANGE	1	1	1	1	1	
12	90464-12810	CLAMP	1	1	1	1	1	
13	90269-06811	RIVET	1	1	1	1	1	
14	54P-H1960-00	RECTIFIER & REGULATOR ASSY	1	1	1	1	1	
15	90105-068A0	BOLT, FLANGE	1	1	1	1	1	
16	5TP-H1940-00	STARTER RELAY ASSY	1	1	1	1	1	

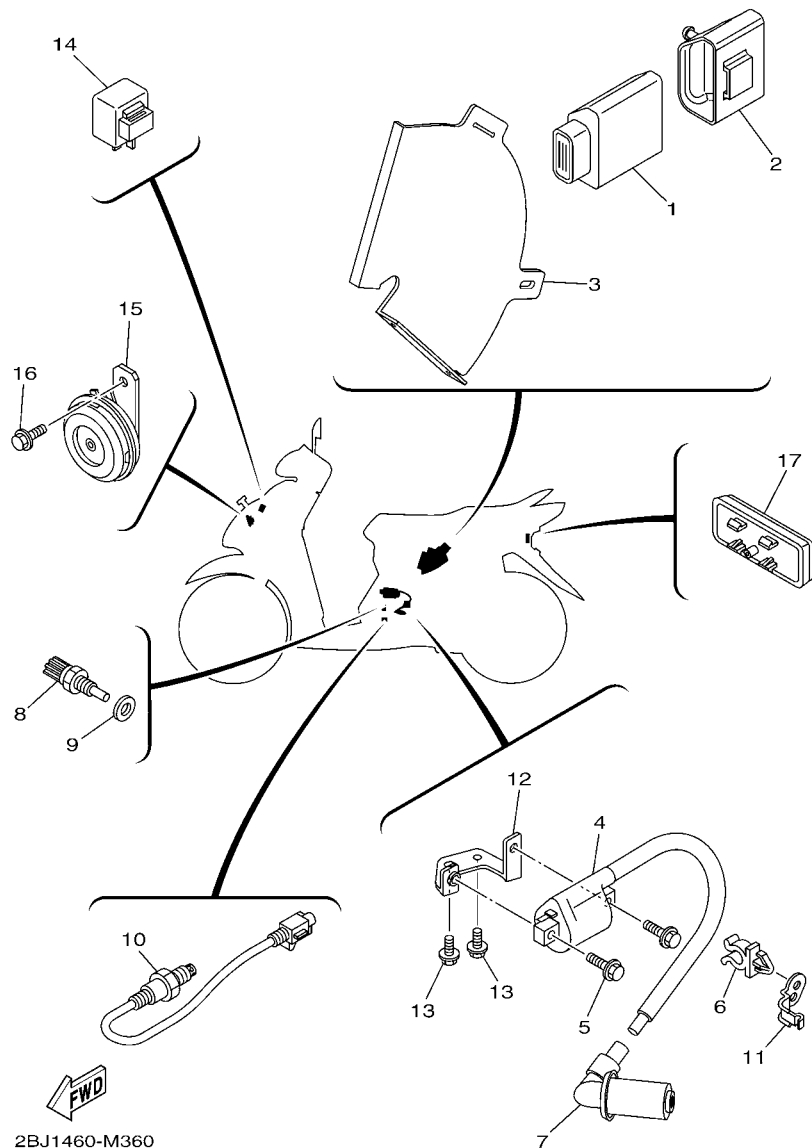


FIG. 39 ELECTRICAL 2

REF. NO.	PART NO.	DESCRIPTION	54P3	54P4	54PC	54PD	54PE	REMARKS
1	54P-H591A-10	ENGINE CONTROL UNIT ASSY	1	1	1	1	1	
2	54P-H5546-00	BAND	1	1	1	1	1	
3	54P-H2599-00	COVER, CONNECTER	1	1	1	1	1	
4	54P-H2310-10	IGNITION COIL ASSY	1	1	1	1	1	
5	95022-06020	BOLT, FLANGE	2	2	2	2	2	
6	90464-14808	CLAMP	1	1	1	1	1	
7	54P-H2370-00	PLUG CAP ASSY	1	1	1	1	1	
8	54P-H3591-00	THERMO UNIT	1	1	1	1	1	
9	90430-10804	GASKET	1	1	1	1	1	
10	54P-H592A-00	SENSOR, OXYGEN	1	1	1	1	1	
11	54P-H1328-00	CLAMP	1	1	1	1	1	
12	1KP-H2316-00	BRACKET, IGNITION COIL	1	1	1	1	1	
13	95022-06010	BOLT, FLANGE	2	2	2	2	2	
14	5D9-H3350-00	FLASHER RELAY ASSY	1	1	1	1	1	
15	54P-H3371-00	HORN	1	1	1	1	1	
16	95802-06010	BOLT, FLANGE	1	1	1	1	1	
17	54P-H5130-00	REAR REFLECTOR ASSY	1	1	1	1	1	

NUMERICAL INDEX

PART NO.	REF. NO.	PART NO.	REF. NO.	PART NO.	REF. NO.	PART NO.	REF. NO.	PART NO.	REF. NO.	PART NO.	REF. NO.
5LW-15659-01	10 - 6	54P-E2170-00	4 - 1	54P-E4412-00	7 - 25	54P-E5570-00	11 - 4	54P-E7678-10	12 - 24	54P-F1579-H0	15 - 4
18G-23411-00	18 - 17	44D-E2176-00	4 - 5	54P-E4412-10	7 - 25	1GC-E5598-00	11 - 5	54P-E7683-00	12 - 19	54P-F1611-00	15 - 5
5TL-2341E-00	18 - 25	5MX-E2210-10	4 - 11	54P-E442F-10	7 - 42	44D-E5598-00	11 - 5	54P-E7683-10	12 - 19	54P-F1621-00	15 - 10
5TL-2341E-10	18 - 28	54P-E2213-00	4 - 12	54P-E4437-00	7 - 26	5TL-E5601-10	11 - 8	1KP-E7684-00	12 - 20	4ST-F1638-00	30 - 8
36Y-2589H-00	28 - 8	54P-E2228-00	4 - 14	54P-E4437-10	7 - 26	54P-E5620-00	11 - 14	54P-E7684-00	12 - 20	54P-F1711-00-P3	16 - 3
54P-E1102-00	1 - 1	54P-E2231-00	4 - 7	28D-E443E-00	7 - 33	4VP-E5630-00	11 - 16	54P-F1110-20	14 - 1	54P-F1711-00-P6	16 - 3
54P-E111F-00	4 - 3	44D-E2233-00	4 - 8	4ST-E443E-00	10 - 4	54P-E5630-00	11 - 16	54P-F1110-30	14 - 1	54P-F1711-10-P3	16 - 3
54P-E111J-00	1 - 7	54P-E2241-00	4 - 10	5TL-E443E-00	7 - 33	5MX-E5657-00	12 - 30	54P-F1161-00	18 - 35	54P-F1711-10-P6	16 - 3
54P-E1133-10	1 - 2	54P-E2611-00	6 - 13	5TN-E443G-00	7 - 30	5MX-E5673-00	11 - 17	54P-F117K-00	20 - 19	54P-F1721-00-P3	16 - 7
54P-E1165-00	1 - 9	54P-E262H-00	6 - 4	5TP-E443G-00	7 - 30	44D-E5744-00	12 - 23	54P-F1410-00	14 - 3	54P-F1721-00-P6	16 - 7
54P-E1166-00	7 - 39	54P-E2651-00	6 - 1	54P-E4452-00	7 - 29	54P-E6111-00	12 - 1	54P-F1459-00	14 - 10	54P-F1721-10-P3	16 - 7
54P-E1169-00	1 - 10	54P-E2652-00	6 - 3	54P-E4452-10	7 - 29	54P-E6611-00	12 - 25	54P-F1511-00-P1	15 - 1	54P-F1721-10-P6	16 - 7
1LB-E1173-00	1 - 13	54P-E2658-00	6 - 2	54P-E4453-00	7 - 28	54P-E6611-10	12 - 25	54P-F1511-00-P3	15 - 1	54P-F172W-00	16 - 1
54P-E1181-00	1 - 17	54P-E2659-00	6 - 9	54P-E4453-10	7 - 28	54P-E6620-00	12 - 13	54P-F1511-00-P8	15 - 1	54P-F172W-10	16 - 1
54P-E1191-00	1 - 8	44D-E2662-00	3 - 11	54P-E4610-10	8 - 1	54P-E6620-10	12 - 13	54P-F1511-00-P9	15 - 1	54P-F172W-20	16 - 1
54P-E1193-00	1 - 14	54P-E2668-00	6 - 10	14D-E4613-00	8 - 4	54P-E7155-00	13 - 8	54P-F1511-00-PA	15 - 1	54P-F1731-00-P3	16 - 11
4YS-E1198-00	9 - 15	54P-E2684-00	6 - 5	54P-E4718-10	8 - 2	54P-F1511-10-P1	15 - 1	54P-F1511-10-P1	15 - 1	54P-F1731-00-P6	16 - 11
54P-E1311-00	1 - 21	1GC-E3300-00	5 - 1	54P-E5113-00	9 - 20	54P-E7410-00	13 - 1	54P-F1511-10-P3	15 - 1	54P-F1731-10-P3	16 - 11
54P-E1311-10	1 - 21	28D-E3300-10	5 - 1	54P-E5150-00	9 - 1	54P-E7421-00	13 - 4	54P-F1511-10-P6	15 - 1	54P-F1731-10-P6	16 - 11
54P-E1351-00	1 - 22	5TL-E3324-00	2 - 8	54P-E5150-10	9 - 1	54P-E7465-00	12 - 16	54P-F1511-10-P7	15 - 1	40D-F1737-00	30 - 22
1KP-E1400-00	2 - 1	54P-E3411-00	5 - 5	54P-E5191-00	10 - 7	54P-E7465-10	12 - 17	54P-F1511-10-P8	15 - 1	54P-F173E-D0	16 - 13
54P-E1400-00	2 - 1	5LW-E3452-00	2 - 6	54P-E5316-00	10 - 11	54P-E7471-00	12 - 2	54P-F1511-10-P9	15 - 1	54P-F173E-E0	16 - 13
1KP-E1400-10	2 - 1	54P-E3474-00	7 - 16	54P-E5351-00	5 - 4	1KP-E7611-00	12 - 12	3S0-F153E-10	16 - 19	54P-F173E-F0	16 - 13
54P-E1400-10	2 - 1	5LW-E3475-00	5 - 2	54P-E5362-00	9 - 21	54P-E7611-00	12 - 12	54P-F173E-G0	30 - 28	54P-F173E-G0	16 - 13
54P-E1400-20	2 - 1	54P-E3556-10	7 - 3	5LW-E5363-00	9 - 18	54P-E7620-00	12 - 7	5BP-F153E-10	30 - 28	54P-F173E-H0	16 - 13
1KP-E1422-00	2 - 5	54P-E3557-00	7 - 14	54P-E5371-00	9 - 7	54P-E7620-10	12 - 7	5BP-F153E-20	30 - 28	54P-F173E-J0	16 - 13
54P-E1422-00	2 - 5	5LW-E3569-00	6 - 16		10 - 3	1KP-E7623-00	12 - 9	3S0-F153E-30	16 - 19	54P-F173E-K0	16 - 13
54P-E1422-10	2 - 5	54P-E3575-00	7 - 37	54P-E5373-00	9 - 8	54P-E7623-00	12 - 9	5BP-F153E-40	30 - 28	54P-F173E-L0	16 - 13
54P-E1445-00	2 - 14	54P-E3585-00	7 - 1	54P-E5383-00	10 - 9	54P-E7632-00	12 - 8	54P-F1552-00	30 - 10	54P-F173E-M0	16 - 13
54P-E1445-10	2 - 14	54P-E3593-00	7 - 5	54P-E5407-00	10 - 22	54P-E7632-10	12 - 8	54P-F1569-80	15 - 3	54P-F173E-N0	16 - 13
54P-E1603-00	2 - 13	54P-E3595-00	7 - 2	14D-E5408-00	9 - 9	54P-E7641-00	12 - 26	54P-F1569-90	15 - 3	54P-F173F-D0	16 - 14
1KP-E1631-00	2 - 10	54P-E3750-10	7 - 17	54P-E5408-00	10 - 17	1GC-E7645-00	12 - 27	54P-F1569-A0	15 - 3	54P-F173F-E0	16 - 14
54P-E1633-00	2 - 11	54P-E3761-10	7 - 9	54P-E5411-00	10 - 1	44D-E7645-00	12 - 27	54P-F1569-B0	15 - 3	54P-F173F-F0	16 - 14
5D9-E1651-00	2 - 4	5LW-E3769-00	9 - 22	54P-E5413-00	10 - 25	54P-E7649-00	12 - 33	54P-F1569-C0	15 - 3	54P-F173F-G0	16 - 14
5MX-E1681-10	2 - 2	54P-E3770-10	7 - 8	54P-E5417-00	9 - 23	54P-E7649-10	12 - 33	54P-F1569-D0	15 - 3	54P-F173F-H0	16 - 14
54P-E2111-00	3 - 1	54P-E3815-00	7 - 20	54P-E5421-00	9 - 36	1KP-E7653-00	12 - 10	54P-F1569-E0	15 - 3	54P-F173F-J0	16 - 14
54P-E2113-00	3 - 4	54P-E3892-00	7 - 18	54P-E5423-00	9 - 30	54P-E7653-00	12 - 10	54P-F1569-F0	15 - 3	54P-F173F-K0	16 - 14
1KP-E2117-00	3 - 6	54P-E3895-00	7 - 19	54P-E5451-00	10 - 2	54P-E7660-00	12 - 14	54P-F1569-G0	15 - 3	54P-F173F-L0	16 - 14
54P-E2117-00	3 - 6	54P-E3907-10	19 - 6	54P-E5453-00	9 - 26	54P-E7660-10	12 - 14	54P-F1569-H0	15 - 3	54P-F173F-M0	16 - 14
5TL-E2118-00	3 - 5	54P-E3915-00	19 - 7	54P-E5461-00	9 - 37	1KP-E7664-00	12 - 18	54P-F1579-80	15 - 4	54P-F173F-N0	16 - 14
54P-E2119-00	3 - 3	54P-E3938-00	7 - 12	54P-E5471-00	10 - 18	5TL-E7664-00	12 - 18	54P-F1579-90	15 - 4	54P-F173X-00	16 - 17
54P-E2121-00	3 - 2	54P-E3971-00	19 - 3	54P-E5472-00	10 - 20	44D-E7668-00	12 - 21	54P-F1579-A0	15 - 4	54P-F173X-10	16 - 17
1DY-E2126-00	3 - 7	54P-E4137-00	7 - 13	54P-E5473-00	10 - 16	54P-E7670-00	12 - 15	54P-F1579-B0	15 - 4	54P-F173Y-00	16 - 18
5P0-E2126-00	3 - 7	54P-E4146-00	7 - 23	54P-E5495-00	10 - 21	54P-E7670-10	12 - 15	54P-F1579-C0	15 - 4	54P-F173Y-10	16 - 18
54P-E2146-00	3 - 12	54P-E4147-00	7 - 10	54P-E5512-00	11 - 6	1KP-E7674-00	12 - 11	54P-F1579-D0	15 - 4	54P-F174G-E0	16 - 15
54P-E2151-00	3 - 8	5CA-E4147-00	7 - 11	44D-E5521-00	11 - 7	54P-E7674-00	12 - 11	54P-F1579-E0	15 - 4	54P-F174G-F0	16 - 15
54P-E2151-10	3 - 8	54P-E4411-00	7 - 24	54P-E5524-00	11 - 1	52B-E7678-00	12 - 24	54P-F1579-F0	15 - 4	54P-F174G-G0	16 - 15
33S-E2159-00	3 - 10	54P-E4411-10	7 - 24	18S-E5570-00	11 - 4	54P-E7678-00	12 - 22	54P-F1579-G0	15 - 4	54P-F174G-H0	16 - 15

NUMERICAL INDEX

PART NO.	REF. NO.	PART NO.	REF. NO.	PART NO.	REF. NO.	PART NO.	REF. NO.	PART NO.	REF. NO.	PART NO.	REF. NO.
54P-F174G-J0	16 - 15	28D-F3412-00	18 - 24	54P-F5338-20-P0	25 - 1	54P-F6143-10-P6	27 - 5	54P-F8311-00-P3	30 - 1	54P-F8365-10	30 - 3
54P-F174G-K0	16 - 15	54P-F3412-00	18 - 26	5MX-F533A-00	25 - 12	54P-F6143-10-P7	27 - 5	54P-F8311-00-P7	30 - 1	54P-F8365-20	30 - 3
54P-F174G-L0	16 - 15	1KL-F3412-10	18 - 24		26 - 16	54P-F6143-10-P8	27 - 5	54P-F8311-00-P8	30 - 1	54P-F8385-00	30 - 7
54P-F174G-M0	16 - 15	4RT-F3412-10	18 - 26	54P-F5351-00	25 - 10	54P-F6143-10-P9	27 - 5	54P-F8311-00-P9	30 - 1	54P-F83D3-00-P3	30 - 14
54P-F174G-N0	16 - 15	54P-F3415-00	18 - 30		26 - 14	54P-F6145-00	27 - 9	54P-F8311-10-P1	30 - 1	54P-F83D3-00-P6	30 - 14
54P-F174G-P0	16 - 15	3AY-F3416-00	18 - 29	5MX-F5351-00	25 - 10	54P-F6145-10	27 - 9	54P-F8311-10-P3	30 - 1	54P-F83D3-10-P1	30 - 14
54P-F174H-E0	16 - 16	1P6-F341E-10	18 - 28		26 - 14	54P-F6145-20	27 - 9	54P-F8311-10-P6	30 - 1	54P-F83D3-10-P3	30 - 14
54P-F174H-F0	16 - 16	5VL-F341E-10	18 - 25	5LW-F5355-00	25 - 11	54P-F6192-60	27 - 32	54P-F8311-10-P7	30 - 1	54P-F83D3-10-P6	30 - 14
54P-F174H-G0	16 - 16	54P-F4110-00	19 - 1		26 - 15	54P-F6192-70	27 - 32	54P-F8311-10-P8	30 - 1	54P-F83D3-10-P7	30 - 14
54P-F174H-H0	16 - 16	54P-F4110-10	19 - 1	5P0-F5802-00	23 - 4	54P-F6192-80	27 - 32	54P-F8311-10-P9	30 - 1	54P-F83D3-10-P8	30 - 14
54P-F174H-J0	16 - 16	54P-F414A-00	19 - 11		24 - 5	54P-F6192-90	27 - 32	54P-F831Y-G0	30 - 25	54P-F83D4-00-P3	30 - 17
54P-F174H-K0	16 - 16	54P-F414G-00	19 - 8	5YP-F5803-50	23 - 5	54P-F6192-A0	27 - 32	54P-F831Y-H0	30 - 25	54P-F83D4-00-P6	30 - 17
54P-F174H-L0	16 - 16	5D9-F414G-00	14 - 2		24 - 6	44D-F6240-00	27 - 13	54P-F831Y-J0	30 - 25	54P-F83D4-10-P1	30 - 17
54P-F174H-M0	16 - 16	54P-F419F-00	19 - 4	3C1-F5805-10	23 - 9	44D-F6241-00	27 - 14	54P-F831Y-K0	30 - 25	54P-F83D4-10-P3	30 - 17
54P-F174H-N0	16 - 16	54P-F4491-00	19 - 9		24 - 10	54P-F6246-00	27 - 15	54P-F831Y-L0	30 - 25	54P-F83D4-10-P6	30 - 17
54P-F174H-P0	16 - 16	4YY-F4610-10	19 - 12	44D-F580U-01	23 - 3	54P-F6280-00	27 - 16	54P-F831Y-M0	30 - 25	54P-F83D4-10-P7	30 - 17
54P-F2141-00	14 - 12	4YY-F4612-10	19 - 13	54P-F580U-01	24 - 4	2P2-F6280-11	27 - 16	54P-F831Y-N0	30 - 25	54P-F83D4-10-P8	30 - 17
54P-F2210-20	17 - 1	54P-F4704-00	20 - 5	5P0-F5827-00	23 - 14	54P-F6281-00	27 - 29	54P-F831Y-P0	30 - 25	54P-F83GF-30	30 - 23
54P-F2210-40	17 - 1	54P-F470F-00	20 - 2	54P-F582U-00	23 - 1	54P-F6282-00	27 - 30	54P-F831Y-R0	30 - 25	54P-F83GF-40	30 - 23
5MX-F2216-00	9 - 5	54P-F4726-00	20 - 14		24 - 1	54P-F6290-00	27 - 17	54P-F831Y-S0	30 - 25	54P-F83GF-50	30 - 23
54P-F3100-10	18 - 1	5TL-F4727-00	20 - 13	5P0-F583T-03	28 - 4	2P2-F6290-11	27 - 17	54P-F832B-E0	30 - 26	54P-F83GF-60	30 - 23
54P-F3100-20	18 - 1	54P-F4730-00	20 - 1	5P0-F5852-00	28 - 7	54P-F6301-20	27 - 18	54P-F832B-F0	30 - 26	54P-F83GF-70	30 - 23
14D-F3108-00	27 - 10	3C1-F4741-00	20 - 4	5P0-F5854-00	28 - 6	54P-F6301-30	27 - 18	54P-F832B-G0	30 - 26	54P-F83GF-80	30 - 23
54P-F3110-10	18 - 8	5TL-F4741-00	20 - 3	5P0-F5855-00	28 - 10	54P-F6351-00	27 - 21	54P-F832B-K0	30 - 26	54P-F83GF-90	30 - 23
1FC-F3111-10	18 - 19	54P-F4773-00-P0	20 - 22	5TL-F5867-01	28 - 9	54P-F6351-20	27 - 21	54P-F832B-L0	30 - 26	54P-F83GF-A0	30 - 23
54P-F3126-10	18 - 5	54P-F4773-00-P2	20 - 22	14D-F5872-00	28 - 1	54P-F637G-00	27 - 22	54P-F832B-M0	30 - 26	54P-F83GF-B0	30 - 23
54P-F3136-10	18 - 2	54P-F4773-00-P3	20 - 22	28D-F5875-00	18 - 32	54P-F7111-01	29 - 1	54P-F832B-N0	30 - 26	54P-F83GF-C0	30 - 23
54P-F3141-10	18 - 15	54P-F4773-00-P5	20 - 22	28D-F5876-00	18 - 33	54P-F7111-10	29 - 1	54P-F832B-P0	30 - 26	54P-H1328-00	39 - 11
5LM-F3144-00	18 - 14	54P-F4773-00-P6	20 - 22	5YP-F5917-00	23 - 6	54P-F7112-00	29 - 2	54P-F832C-E0	30 - 27	54P-H132G-00	31 - 5
3AY-F3145-00	18 - 3	54P-F4773-00-P7	20 - 22		24 - 7	44D-F7114-00	14 - 6	54P-F832C-F0	30 - 27	54P-H1410-10	31 - 2
	18 - 6	5TL-F4780-00	20 - 16	5P0-F5919-00	23 - 11	4YY-F7114-00	29 - 16	54P-F832C-G0	30 - 27	54P-H1450-00	31 - 1
2JG-F3147-00	18 - 20	54P-F478E-00	20 - 21		24 - 12	54P-F7114-00	27 - 23	54P-F832C-K0	30 - 27	5TP-H1801-00	32 - 2
5D9-F3152-00	18 - 11	5TL-F4792-00	20 - 17	5YP-F5924-00	23 - 12	54P-F7121-00	9 - 4	54P-F832C-L0	30 - 27	5D9-H1828-00	32 - 4
5P0-F3153-00	18 - 23	5TL-F5104-01	22 - 5		24 - 13	5LW-F7254-00	29 - 5	54P-F832C-M0	30 - 27	5D9-H1861-00	32 - 3
5P0-F3156-00	18 - 4	54P-F5111-00-35	22 - 1	5YP-F5925-01	23 - 10	54P-F7267-00	29 - 6	54P-F832C-N0	30 - 27	54P-H1890-02	32 - 1
	18 - 7	54P-F5168-00-33	21 - 1		24 - 11	54P-F7311-00	29 - 11	54P-F832C-P0	30 - 27	5TP-H1940-00	38 - 16
2JG-F3157-00	18 - 10	54P-F5168-00-P1	21 - 1	5YP-F5937-00	23 - 7	54P-F7430-00	29 - 17	54P-F832L-G0	30 - 24	54P-H1960-00	38 - 14
2BU-F3158-00	18 - 12	3AY-F5181-01	21 - 8		24 - 8	54P-F7431-00	29 - 18	54P-F832L-H0	30 - 24	14D-H2100-00	38 - 1
4D0-F3165-00	18 - 22		22 - 12	5YP-F5939-00	23 - 13	54P-F7432-00	29 - 19	54P-F832L-J0	30 - 24	14D-H2100-10	38 - 1
28D-F3170-00	18 - 9	54P-F518A-00	24 - 3		24 - 14	54P-F7440-00	29 - 25	54P-F832L-K0	30 - 24	54P-H2115-00	38 - 2
278-F3181-50	18 - 13	5TL-F5190-01	21 - 11	54P-F6110-00	27 - 1	54P-F7441-00	29 - 26	54P-F832L-L0	30 - 24	54P-H2116-00	38 - 5
28D-F3340-00	18 - 16		22 - 15	54P-F6143-00-P1	27 - 5	54P-F7442-00	29 - 27	54P-F832L-M0	30 - 24	54P-H2129-00	20 - 10
54P-F3340-10	18 - 16	1LB-F530K-00	25 - 7	54P-F6143-00-P3	27 - 5	54P-F7481-00	29 - 7	54P-F832L-N0	30 - 24	54P-H2151-00	38 - 3
4D0-F3346-00	18 - 18		26 - 11	54P-F6143-00-P7	27 - 5	54P-F8100-00	20 - 25	54P-F832L-P0	30 - 24	1KP-H2176-00	20 - 6
54P-F334G-00	18 - 21	5TL-F5311-00	26 - 1	54P-F6143-00-P8	27 - 5	54P-F8300-00	30 - 2	54P-F832L-R0	30 - 24	54P-H2310-10	39 - 4
54P-F3411-00	18 - 27	54P-F5326-00	25 - 4	54P-F6143-00-P9	27 - 5	54P-F8300-10	30 - 2	54P-F832L-S0	30 - 24	1KP-H2316-00	39 - 12
4FP-F3411-10	18 - 17		26 - 8	54P-F6143-10-P1	27 - 5	54P-F8300-20	30 - 2	54P-F8356-01	14 - 14	54P-H2370-00	39 - 7
4RT-F3411-10	18 - 27	54P-F5338-20-33	25 - 1	54P-F6143-10-P3	27 - 5	54P-F8311-00-P1	30 - 1	54P-F8365-00	30 - 3	1LB-H2556-00	37 - 15

NUMERICAL INDEX

PART NO.	REF. NO.	PART NO.	REF. NO.	PART NO.	REF. NO.	PART NO.	REF. NO.	PART NO.	REF. NO.	PART NO.	REF. NO.
54P-H2590-20	38 - 10	54P-H4743-00	36 - 4	90179-25002	18 - 31	90387-08821	14 - 7	91312-06020	32 - 5	93306-372X2	2 - 7
54P-H2590-30	38 - 10	54P-H4743-10	36 - 4	90183-05807	16 - 6	90387-10837	21 - 7		37 - 18	93306-372Y5	2 - 7
54P-H2599-00	39 - 3	54P-H5130-00	39 - 17		16 - 10		22 - 11	91312-06025	11 - 15	93306-804Y3	11 - 2
1LB-H2911-00	37 - 6	54P-H5546-00	39 - 2		20 - 9	90388-10800	14 - 11		28 - 11	93306-804Y4	11 - 2
54P-H3310-00	33 - 1	54P-H591A-10	39 - 1		27 - 7	90388-10805	9 - 6	91401-25015	29 - 23	93306-804Y6	11 - 2
5HV-H3311-00	33 - 2	54P-H592A-00	39 - 10		27 - 11	90401-10812	28 - 2		29 - 31	93310-528Y8	2 - 3
	33 - 9	5P0-W0041-00	28 - 5		29 - 8	90430-06014	1 - 5	91701-08035	29 - 22	93317-417Y3	12 - 22
	36 - 3	4C9-W0048-00	23 - 8		30 - 15	90430-08119	9 - 3		29 - 30	93440-10085	1 - 3
54P-H3320-00	33 - 8		24 - 9		30 - 18		9 - 17	91810-14809	1 - 18	93450-14088	2 - 12
5D9-H3350-00	39 - 14	54P-WE445-00	7 - 27		33 - 5	90430-10804	39 - 9		1 - 19	93450-24831	12 - 23
54P-H3371-00	39 - 15	54P-WE445-10	7 - 27		33 - 12	90464-12810	38 - 12		9 - 10	93450-32837	11 - 3
54P-H3509-00	34 - 6	28D-WF53H-10	26 - 2		36 - 8	90464-14808	39 - 6		9 - 33	93501-04843	29 - 21
54P-H3510-01	34 - 1	54P-XH252-00	38 - 6	90185-10811	21 - 9	90464-16801	37 - 17		9 - 38		29 - 29
54P-H3511-00	34 - 2	90101-06046	25 - 14		22 - 13	90467-110A3	10 - 5		10 - 12	94107-14802	21 - 5
2S0-H3516-00	33 - 3		26 - 18	90185-10815	27 - 4	90467-12807	7 - 31	92012-05010	27 - 20		22 - 6
	33 - 10	90101-08847	29 - 12	90185-14814	25 - 15	90467-12809	7 - 31	92012-05016	27 - 19	94108-14802	25 - 2
32P-H3517-00	34 - 5	90105-068A0	38 - 15		26 - 19	90467-13858	7 - 40	92902-06600	38 - 9		26 - 3
4TE-H3517-00	34 - 4	90105-08861	17 - 2	90201-10065	17 - 5		7 - 41	93102-15801	11 - 13	94207-14802	21 - 6
54P-H353F-00	34 - 3	90105-088E1	4 - 4	90201-10118	28 - 3	90467-15804	7 - 21	93102-17803	12 - 6		22 - 7
54P-H3550-00	34 - 10	90105-088E3	14 - 8	90201-10831	21 - 10		7 - 22	93102-19814	9 - 24	94208-14802	25 - 3
54P-H3550-10	34 - 10	90105-10036	27 - 3		22 - 14	90480-13013	7 - 36	93102-25816	9 - 31		26 - 4
54P-H3591-00	39 - 8	90105-10283	14 - 4	90201-12028	17 - 4	90501-12743	29 - 20	93102-26809	13 - 7	94307-14802	22 - 8
5HH-H362Y-00	34 - 8	90109-06202	15 - 2	90201-12688	31 - 6		29 - 28	93104-33805	12 - 16		26 - 5
1LB-H3912-00	37 - 7		15 - 7	90201-14820	25 - 16	90501-16003	27 - 26	93106-20816	21 - 3	94414-14801	22 - 9
5TL-H3922-00	37 - 19		20 - 8		26 - 20	90501-16004	5 - 6		22 - 3	94416-14801	26 - 6
1LB-H3935-00	37 - 8	90109-06255	37 - 20	90201-154E8	11 - 11	90506-12001	25 - 8	93210-07802	25 - 6	94568-F9090	4 - 6
5TL-H3955-20	37 - 2	90109-06798	37 - 12	90201-15841	12 - 29		26 - 12		26 - 10	94700-00880	1 - 16
40D-H3962-00	37 - 10	90110-06868	1 - 20	90201-20276	25 - 17	90506-15001	25 - 9	93210-148H8	9 - 19	94700-00895	1 - 16
1LB-H3967-00	37 - 9	90111-06811	8 - 3		26 - 21		26 - 13	93210-16805	12 - 28	95022-06010	1 - 4
40D-H396X-00	37 - 11	90111-08815	23 - 2	90206-14093	25 - 13	90506-20514	29 - 15	93210-258G2	12 - 34		10 - 8
44D-H3973-00	37 - 1		24 - 2		26 - 17	90506-35821	29 - 4	93210-29800	5 - 7		19 - 5
54P-H3976-00	37 - 5	90116-08843	9 - 13	90208-12808	12 - 31	90508-32768	11 - 9	93210-29803	32 - 6		39 - 13
1LB-H3980-00	37 - 14	90119-06044	19 - 2	90249-12008	27 - 28	90520-03806	20 - 7	93210-30611	7 - 4	95022-06012	38 - 11
54P-H3980-00	37 - 22		29 - 9	90269-06811	38 - 13		20 - 11	93210-38800	12 - 17	95022-06014	27 - 25
54P-H4140-00	33 - 4	90149-05801	1 - 11	90269-06812	15 - 9	90520-03810	20 - 24	93210-94800	6 - 14	95022-06016	9 - 29
	35 - 3	90149-10805	23 - 15		30 - 13	90520-03811	30 - 11	93211-07800	9 - 25	95022-06020	4 - 13
54P-H4150-00	33 - 11		24 - 15	90280-03017	2 - 9	90520-05810	6 - 8	93211-37803	9 - 32		39 - 5
54P-H4310-01	35 - 1	90151-06811	10 - 10	90340-12808	9 - 14	90520-08806	15 - 6	93306-002YS	4 - 2	95022-06025	9 - 34
5HV-H4314-00	35 - 2	90159-06054	20 - 20	90380-15811	11 - 10	90520-10811	10 - 19	93306-002YW	4 - 2	95022-06035	9 - 35
3S0-H4374-00	33 - 7	90159-06810	16 - 12	90387-05820	16 - 4	90520-15806	10 - 26	93306-006Y5	12 - 36		9 - 39
	33 - 14	90163-05803	7 - 32		16 - 8	90520-20806	27 - 6	93306-006Y7	12 - 36		10 - 13
	35 - 4	90170-05803	3 - 9	90387-064W3	7 - 35	90560-10292	21 - 2	93306-054X9	13 - 6	95022-06040	27 - 24
54P-H454E-00	30 - 20	90170-12800	12 - 32	90387-067V1	6 - 7		22 - 2	93306-253Y3	13 - 9	95022-06045	10 - 14
54P-H4704-00	36 - 5	90170-28801	12 - 21	90387-06891	7 - 34	91312-05010	19 - 10	93306-253Y9	12 - 5	95022-06060	9 - 11
54P-H4704-10	36 - 6	90175-06013	27 - 27	90387-07811	30 - 5	91312-06010	12 - 3	93306-300YL	21 - 4	95022-06070	9 - 12
54P-H4710-10	36 - 1	90179-08518	1 - 15	90387-08815	22 - 10	91312-06012	4 - 9		22 - 4		9 - 28
54P-H4710-20	36 - 1	90179-10803	12 - 35		26 - 7	91312-06014	38 - 8	93306-301XT	13 - 2	95022-06080	10 - 15
4AC-H4714-00	36 - 2	90179-12004	31 - 7	90387-08820	29 - 13	91312-06018	31 - 3		13 - 3	95022-08012	9 - 2

NUMERICAL INDEX

PART NO.	REF. NO.	PART NO.	REF. NO.	PART NO.	REF. NO.	PART NO.	REF. NO.	PART NO.	REF. NO.
95302-10600	17 - 3	97707-50016	30 - 6						
9530N-03600	34 - 7		30 - 9						
95602-06100	37 - 13		30 - 12						
	37 - 21		30 - 16						
95602-08200	14 - 9		30 - 19						
	29 - 14		33 - 6						
95602-10200	14 - 5		33 - 13						
	14 - 13		34 - 9						
95612-08618	1 - 6		36 - 9						
95702-06500	20 - 15		37 - 4						
	20 - 18	97707-50020	6 - 6						
95702-08500	8 - 5	98502-05010	37 - 16						
95702-10500	25 - 5	98502-05020	5 - 3						
	26 - 9	98502-05025	27 - 31						
95802-06010	14 - 15	98502-06016	31 - 4						
	18 - 34	98902-05008	38 - 4						
	18 - 36	98907-06012	30 - 4						
	35 - 5	99002-08600	29 - 3						
	39 - 16	99009-15400	11 - 12						
95802-06030	30 - 21	99009-17400	12 - 4						
95802-08030	29 - 24	99480-05010	9 - 27						
	29 - 32								
95812-06025	7 - 15								
	7 - 38								
95812-06030	1 - 12								
95812-06035	7 - 6								
95812-06050	7 - 7								
95812-08016	9 - 16								
95812-08045	8 - 6								
95822-06016	6 - 15								
	20 - 23								
95822-06020	10 - 24								
95822-06090	10 - 23								
97602-05208	38 - 7								
97602-05216	37 - 3								
97602-06220	6 - 11								
97702-50025	7 - 32								
97702-60530	6 - 12								
97707-04616	36 - 7								
97707-50012	20 - 12								
97707-50016	15 - 8								
	16 - 2								
	16 - 5								
	16 - 9								
	27 - 2								
	27 - 8								
	27 - 12								
	29 - 10								